

BMG Resources Ltd (ASX: BMG)

ACN 107 118 678



High-Grade Gold in Western Australia

Company Update
November 2020

Important Notice and Disclaimer

Exploration Results

The information in this presentation that relates to potential Exploration Results and Mineral Resources has been reviewed by Ben Pollard, who is a Member of the Australasian Institute of Mining and Metallurgy. Mr Pollard has sufficient experience, which is relevant to the style of mineralization and type of deposit under consideration and to the activity, which they are undertaking to qualify as an Expert and Competent Person as defined under the VALMIN Code and in the 2015 Edition of the 'Australasian Code for Reporting of Exploration Results, Mineral Resources and Ore Reserves'. Mr Pollard consents to the inclusion in this presentation of the matters based on the information in the form and context in which they appear.

Forward-Looking Statements

This document may include forward-looking statements. Forward-looking statements include, but are not limited to, statements concerning BMG Resources Limited's planned exploration program and other statements that are not historical facts. Although BMG Resources Limited believes that its expectations reflected in these forward-looking statements are reasonable, such statements involve risks and uncertainties and no assurance can be given that actual results will be consistent with these forward-looking statements.

No Offer of Securities

The information contained in this presentation is for informational purposes only and does not constitute an offer to issue, or arrange to issue, securities or other financial products. The information contained in this presentation is not investment or financial product advice and is not intended to be used as the basis for making an investment decision. The presentation has been prepared without taking into account the investment objectives, financial situation or particular needs of any particular person.

No warranty of accuracy or completeness

No representation or warranty, express or implied, is made as to the fairness, accuracy, completeness or correctness of the information, opinions and conclusions contained in this presentation. To the maximum extent permitted by law, none of BMG Resources Limited, its directors, employees or agents, nor any other person accepts any liability, including, without limitation any liability arising out of fault or negligence, for any loss arising from the use of the information contained in this presentation. In particular, no representation or warranty, express or implied is given as to the accuracy, completeness or correctness, likelihood of achievement or reasonableness or any forecasts, prospects or returns contained in this presentation nor is any obligation assumed to update such information. Such forecasts, prospects or returns are by their nature subject to significant uncertainties and contingencies.

Investment Highlights

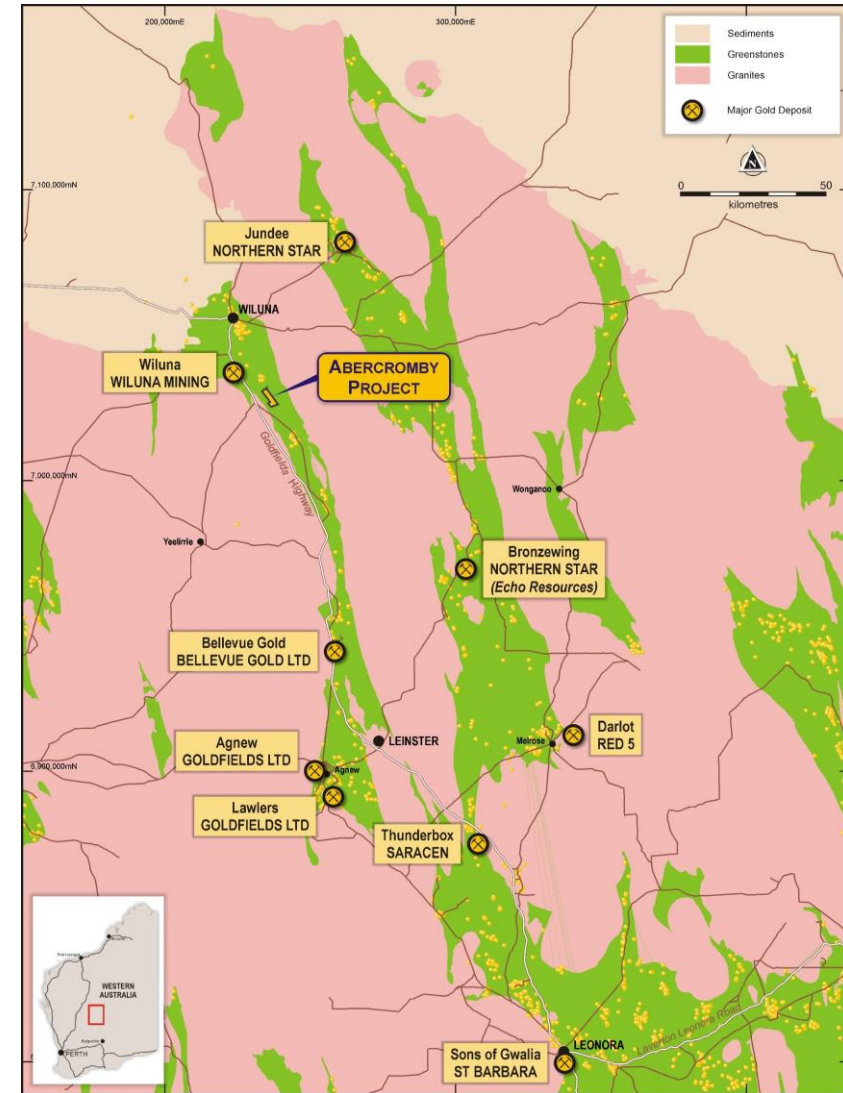
- 100% owned gold projects in Tier 1 mining jurisdiction – WA ranked No. 1 in Fraser Institute 2019 Mining Attractiveness Index
- High-grade discoveries already made with walk up drill targets
 - **Abercromby Project**
 - High grade discovery in Wiluna region awaits resource drill-out
 - Multiple high-grade intersections including 57.5m @ 5.73 g/t Au from 80m
 - Drill ready with potential for fast track to resource definition
 - **Invincible Project**
 - Strategic location in underexplored area of Central Pilbara
 - +12.5km eastern extension of Warrawoona Shear Zone which hosts the growing 1.495m oz Au resource of Calidus Resources (ASX: CAI)
 - Multiple small historic mines including the Invincible mine that produced gold at a grade of 1,380 g/t Au
 - **South Boddington Project**
 - Unexplored ground along strike from the giant Boddington deposit (+40m oz Au deposit) – Exploration Licences under application
- Drilling imminent at Abercromby
 - High impact program with initial 5,000m RC and diamond drilling planned
- Airborne geophysics and radiometric survey of Invincible completed
 - Processing underway, with high priority Au targets expected this month



Abercromby Project

Located in significant gold producing region: Wiluna Belt endowment (+40M oz Au) is second only to Kalgoorlie in WA

- Outstanding gold exploration asset idle in portfolio of base metal major
- Underexplored and undeveloped for over 20 years
- Multiple thick high-grade gold intersections at Abercromby including:
 - 57.5m @ 5.73g/t Au from 80m
 - 58m @ 1.17g/t Au from 77m
 - 30m @ 10.01g/t Au from 164m
 - 36m @ 4.33g/t Au from 100m
- Proximal to operating plants at Wiluna (Wiluna Mining (formerly Blackham Resources), ASX: WMX) and Jundee (Northern Star, ASX: NST)
- Two granted mining leases with BMG (Oracle) to holding exclusive gold and other mineral rights (ex-uranium)
- Exciting gold region:
 - Northern Star acquired Echo Resources for \$242m in 2019
 - Bellevue Gold (ASX: BGL) continues to increase its high-grade resource, reaching a market cap of circa \$800m as share price has risen by approximately 100% in CY20 to date



Abercromby Project

Opportunity to delineate a high-grade resource and to make additional discoveries

- Walk up drill targets to follow-up thick intercepts of high-grade gold
- First phase 5,000m DD/ RC drill program planned to progress towards maiden resource
- Shallow mineralisation supports potential for open-pit mining
- Extensive areas remain unexplored with outstanding potential for more discoveries and increasing scale
- Excellent geology – gold interpreted to be hosted in dolerite sill associated with granophyric zone, similar to St Ives and Kalgoorlie Golden Mile – supports large resource potential

*Sample of assays for historical drilling at Abercromby Project – Capital Prospect
(for details of all drill holes see Schedule 2 of ASX Release dated 17 August 2020)*

Drill Hole	Intercept
HJVRC013	6m@9.77g/t from 12m
01CJVD0003	57.5m@5.73g/t from 80m
HJVAC015	36m@4.33g/t from 100m
HJVRC015	10m@8.7g/t from 134m
96CJVP011	36m@2.01g/t from 86m
HJVAC004	15m@3.96g/t from 36m
HJVDC018	30m@10.01g/t from 164m
95WJVP280	2m@27.9g/t from 27m
96CJVP024	8m@14.47g/t from 114m
95WJVP274	58m@1.71g/t from 77m

Abercromby Project

Capital Prospect – unlocking the potential

- Capital Prospect has a mineralised footprint so far of 1,000m x 300m based on high-grade hits in wide-spaced drilling
- Multiple opportunities to increase the scale and scope of known mineralisation with BMG's upcoming drill program to focus on:
 - testing the down dip continuity of previous strong drill results
 - infill drilling of large gaps in the previous 100m/200m wide-spaced drill traverses that contain significant gold intercepts
 - defining shoot control for multiple high-grade gold intercepts near surface (e.g. 6m @ 9.77g/t from 12m)

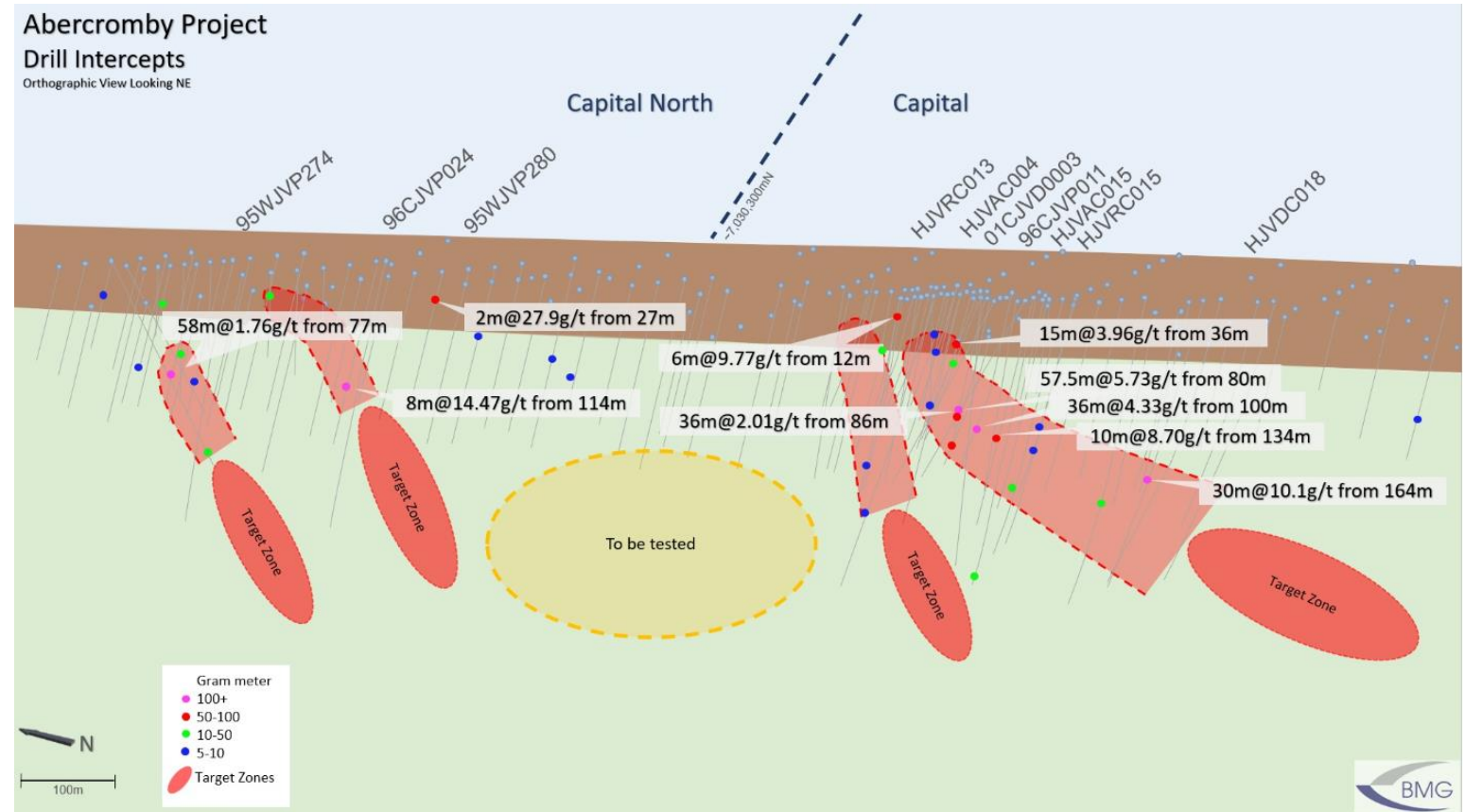
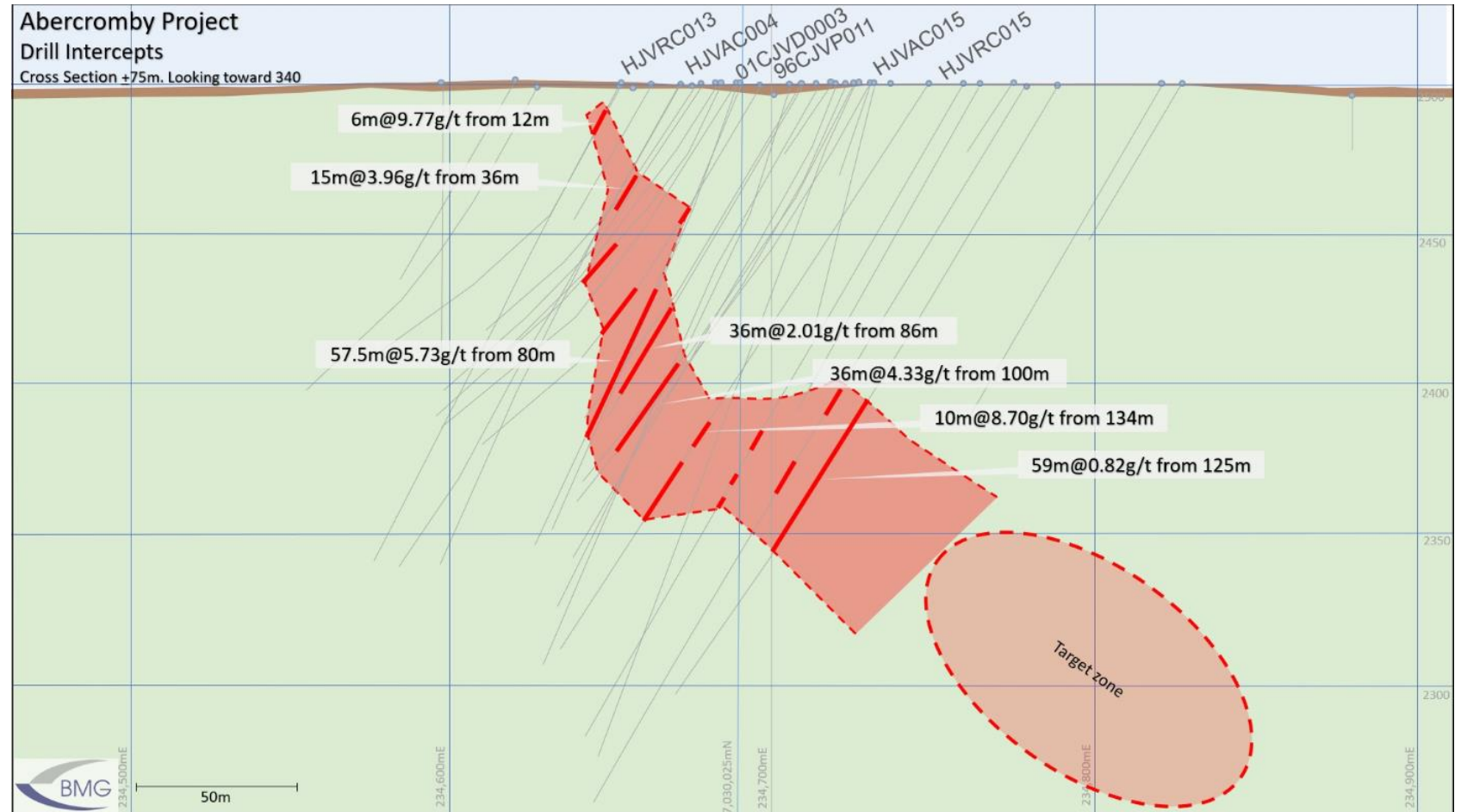


Image above: Oblique section showing Capital mineralization and key target areas

Abercromby Project

Capital Prospect – wide intercepts of high-grade gold

- Consistent high-grade mineralisation within known gold zones
- Targeting additional mineralisation along strike and at depth of existing discoveries

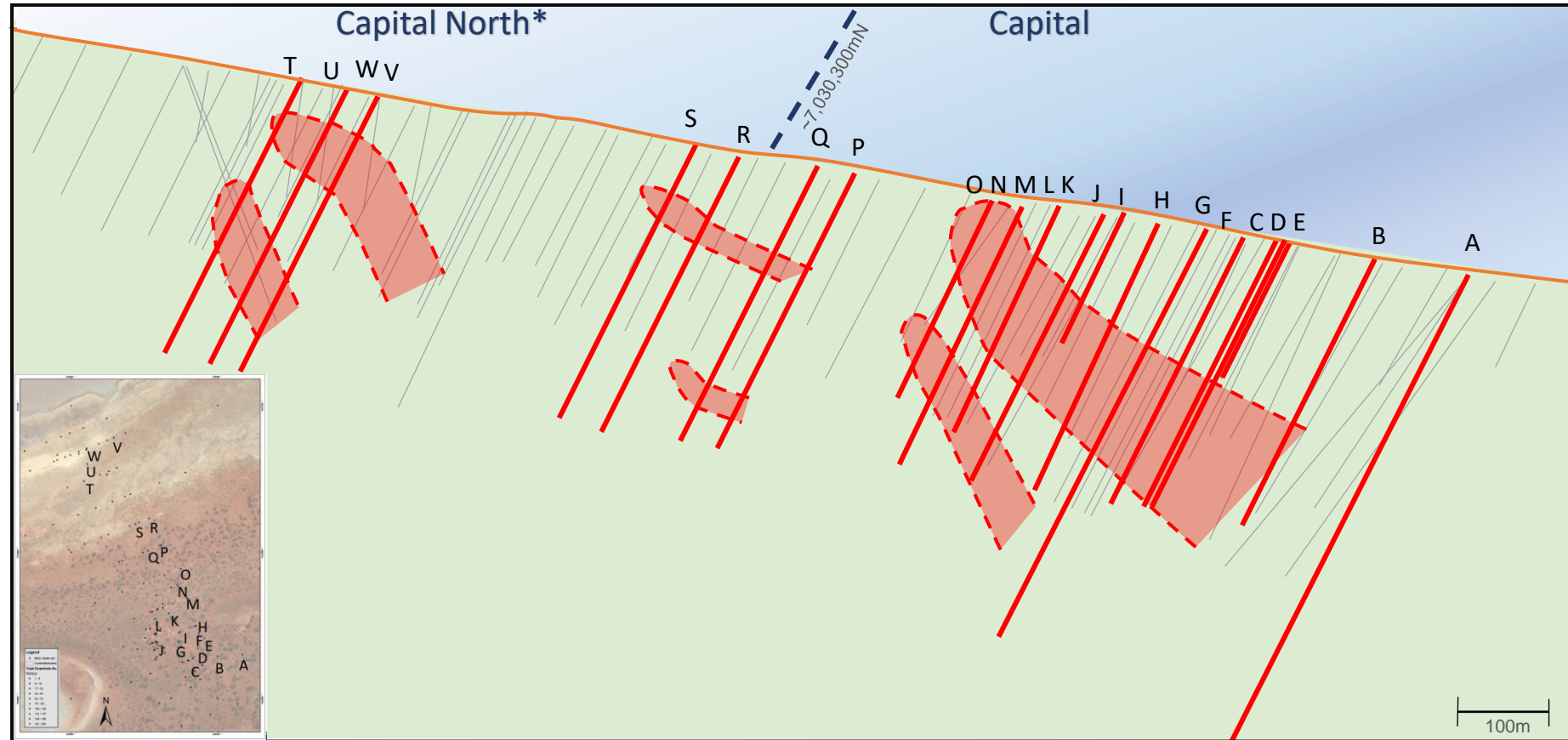


Right Image: cross section +/- 75m at 234700E highlighting one of the target zones for extensional drilling

Abercromby Project

2020 Drill Program

- Drilling scheduled to start end Nov/ early Dec
- +5,000m of RC and diamond drilling planned for initial program
- 23 planned drill holes (* 8 holes P to W subject to heritage approval). Hole order to be determined on site
- Additional drilling to be planned following review of drill results
- Focused on extension and infill drilling to scope out the extent of known high-grade gold mineralisation and progress to a maiden resource
- Strong news flow with drill and assay results over the coming months

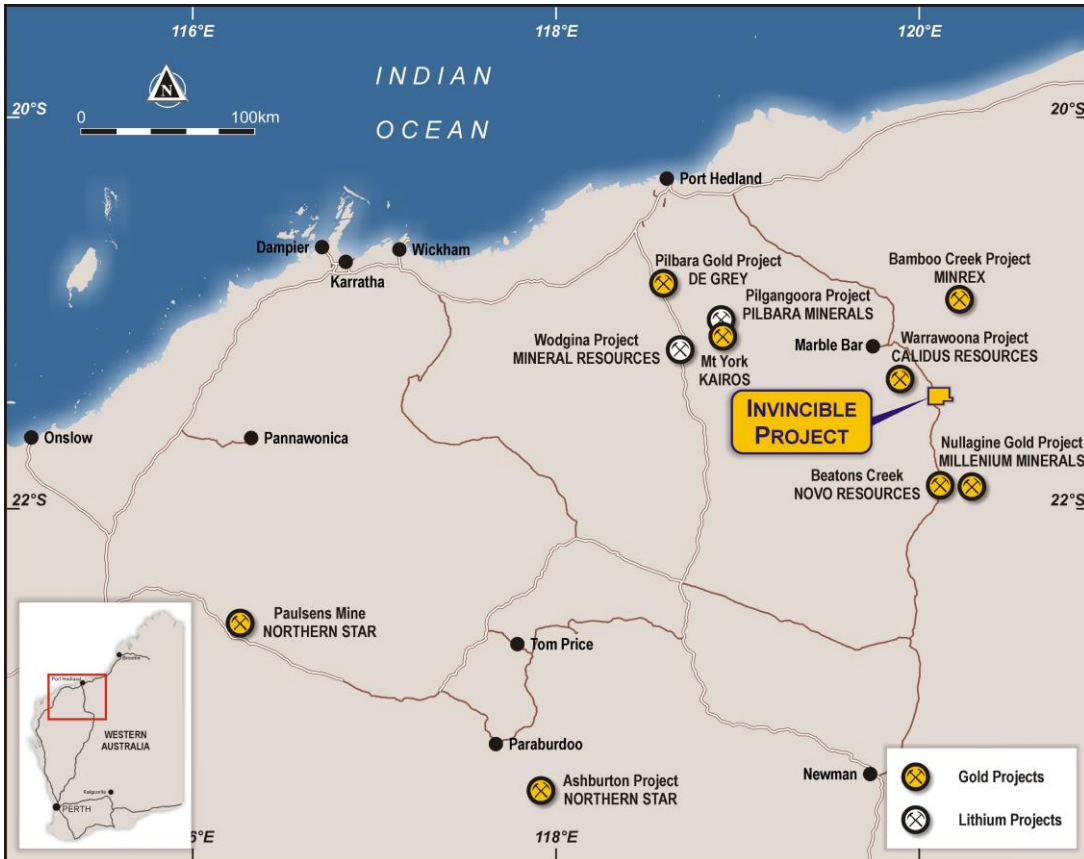


Main Image: Schematic orthographic view (looking north-east) of Capital showing traces of planned drill holes (in red) and historical holes (in grey) over a field of view covering an area approx. 1,000m x 300m.

Bottom Left: plan view map of Capital (against earth image) showing collar location of planned drill holes.

Invincible Project

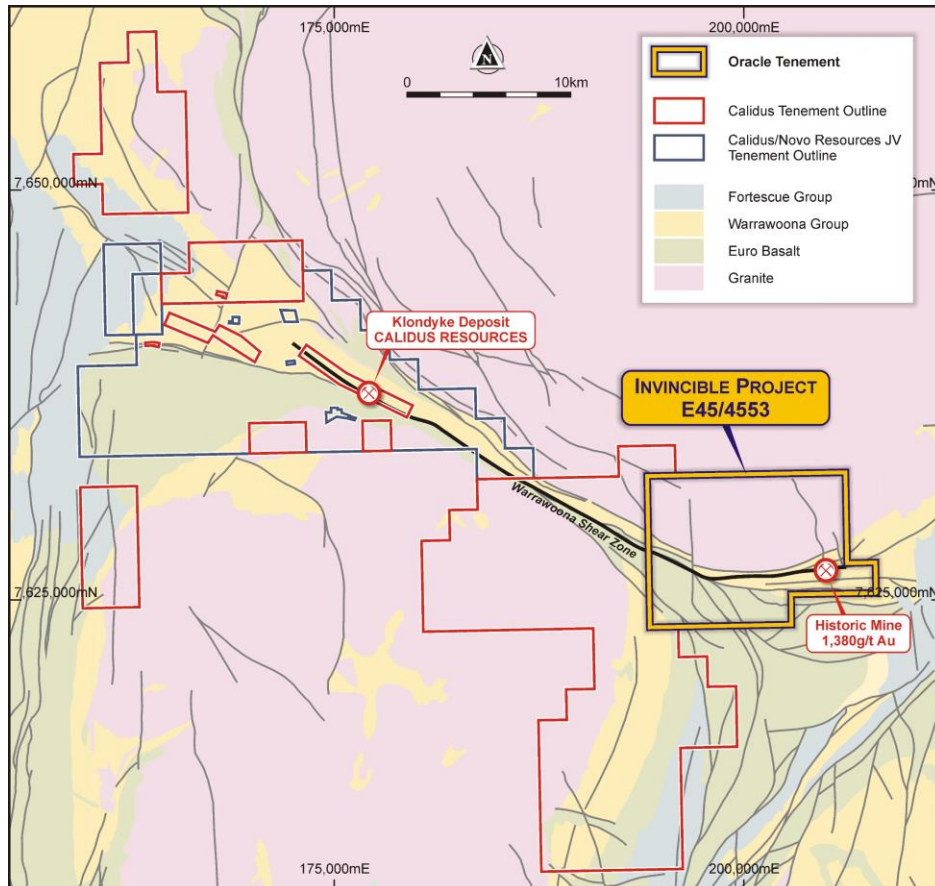
Located in emerging gold district of Central Pilbara



- Immediately along strike from, and hosted by the same stratigraphy, as Calidus Resources' (ASX: CAI) 1.495Moz Au resource – now in development
- Project hosts 12.5km of the Warrawoona Shear Zone – the mineralised trend that hosts the Calidus gold resource
- Multiple, small artisanal workings including the historic Invincible mine where 19.31kg of gold was mined at a grade of 1,380g/t Au
- Little systematic modern exploration with outstanding opportunity for a new high-grade discovery
- Recent major discoveries in the region – including by De Grey Mining (ASX: DEG) at its Hemi Project (NE of Invincible) – have fueled new strong investor interest in Pilbara gold projects

Invincible Project

Gold-bearing shear zone confirmed



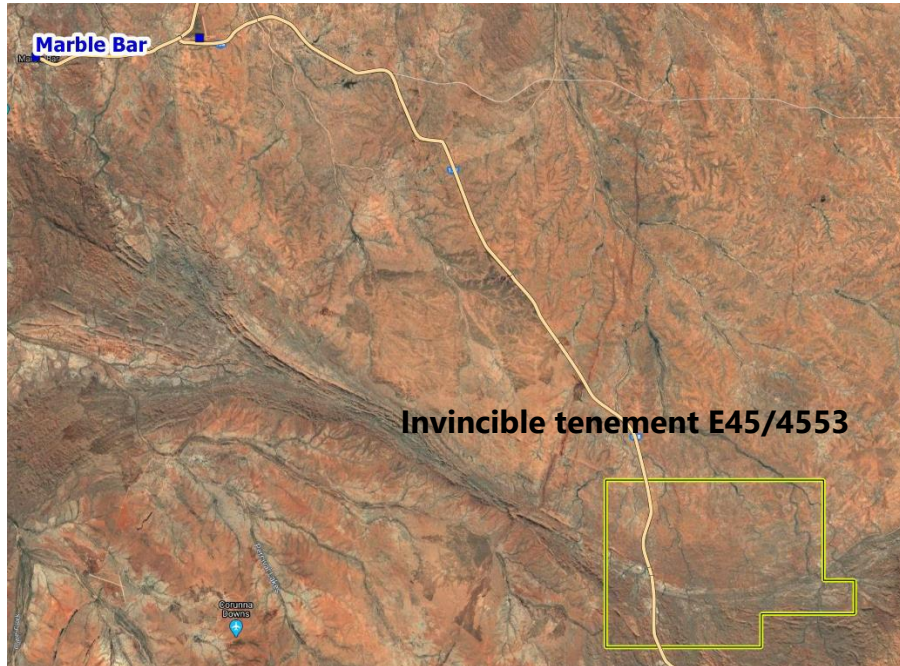
- Invincible Project tenement is contiguous with the tenements of Calidus
- Development is underway by Calidus for a mining operation targeting production of approx. 90,000 oz Au per annum (see *Investor Presentation by Calidus dated 29 June 2020*)
- Recent soil surveys at the Invincible Project confirm large geochemical anomaly (+5km strike) along the interpreted extension of the Warrawoona Shear Zone
- Primary reef gold is hosted in quartz veins within extensive shear zones
- Potential for repeat trends along the Warrawoona Shear Zone (see *Investor Presentation by Calidus dated 29 June 2020*) and for mineralised granite to the north of the shear zone



Photo of quartz vein hosted gold nuggets recovered in 2018 at the Invincible Project and reported in Advice of Minerals Recovered within Section 40E Permit Area dated 8 October 2018.

Invincible Project

Drill targets being generated for maiden drill program



- Ultra-detailed high resolution aeromagnetic and radiometric survey of Project area completed in early November 2020
- Calidus used a similar geophysical survey to generate further gold targets at its adjacent ground – see the ASX Release by Calidus dated 14 October 2020 '*Calidus identifies 22 high-priority regional targets*'

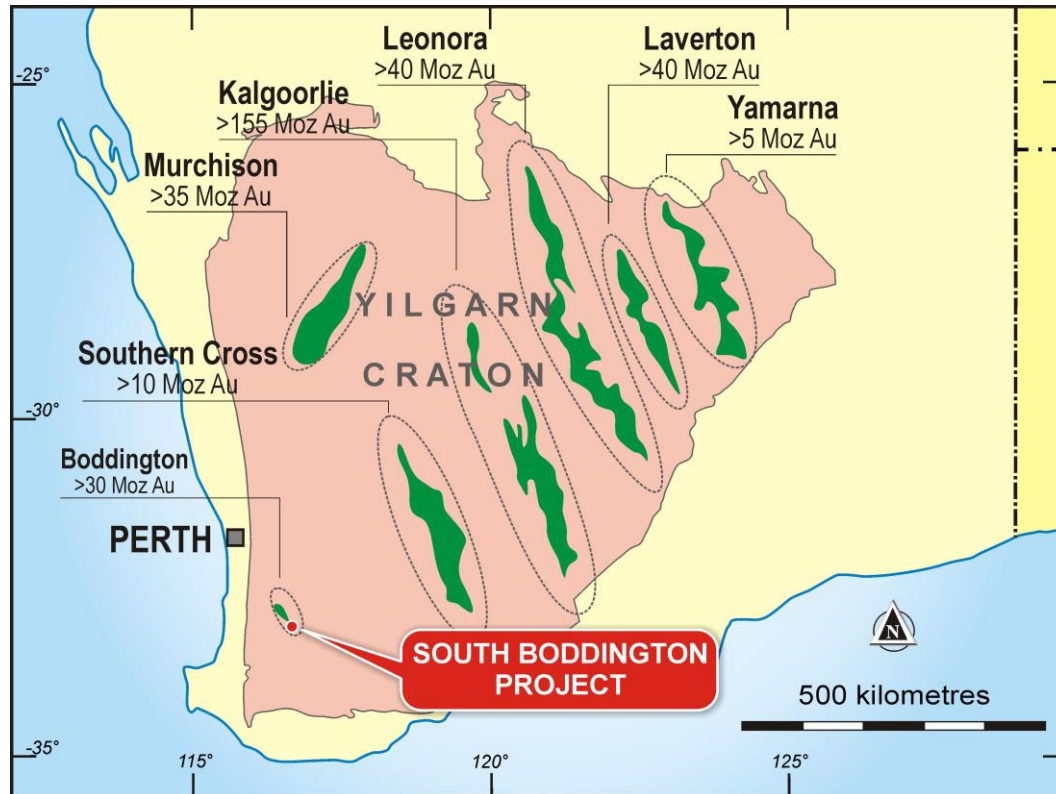
- BMG's survey comprised approximately 5,000 line km in total (25m line spacing x 500m tie lines - refer image below)
- Processing and interpretation of new geophysical data is ongoing in conjunction with other datasets
- High priority gold target areas will be generated and prioritised for drilling in early 2021



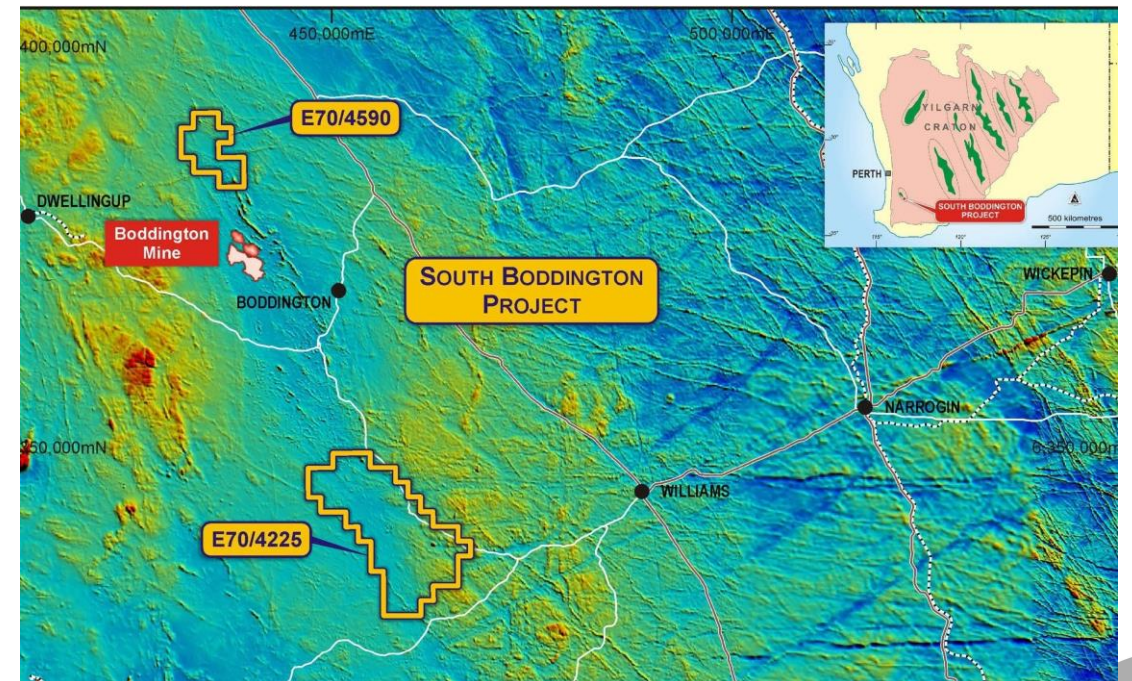
South Boddington Project

Located along strike from the giant Boddington gold deposit (+40Moz Au)

- Project area comprises ground that is within the Saddleback Greenstone Belt which hosts Newmont's (NYSE: NEM) Boddington gold mine



- Strong potential for additional gold deposits along the Belt with most of the Belt unexplored or underexplored
- Two exploration licences in application stage and interpreted to host similar stratigraphy to Boddington
- Boddington is located in an area of magnetic low and similar magnetic lows are seen in BMG's E70/4225 and E70/4590, as shown in the map below with GSWA magnetic data



Corporate Overview

Market Capitalisation (10 November 2020)

A\$30.0m

Listed Shares

239,991,658

Top 20 Shareholders

65%

Listed Options

Nil

Directors and Management

33%

Share Price (10 November 2020)

A\$0.125

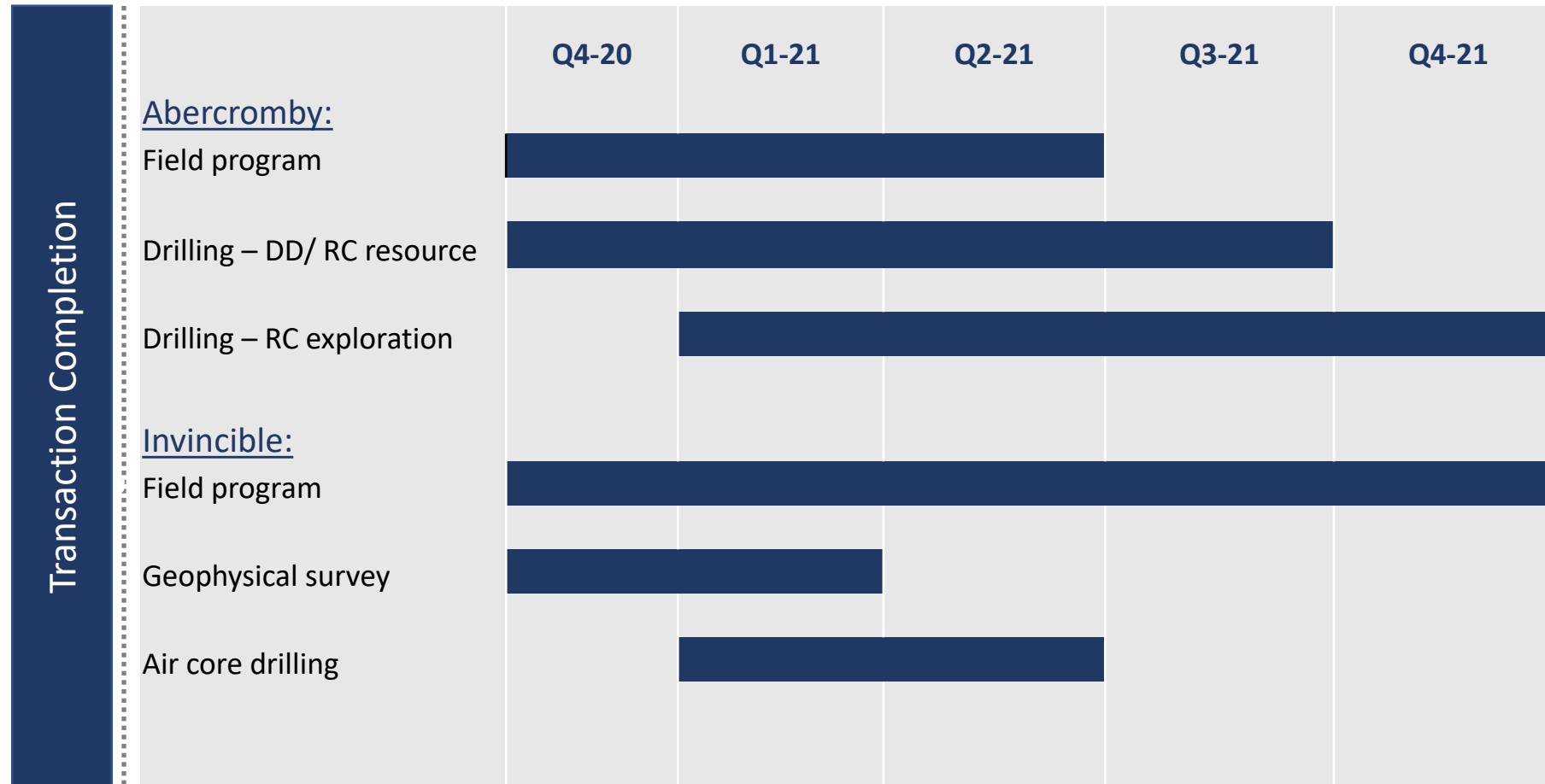
Cash (31 Oct 2020)

c.A\$2.25m

Debt

Nil

Indicative Work Program*



*Subject to change based on a review of the results

Directors and Management Team

Board

Greg Hancock Chairman	Over 25 years of capital markets experience in Australia and the UK. Specialist areas of mining and natural resources and the finance and management of small companies. Joined the BMG board in February 2017, and is currently Chairman of Ausquest Ltd and Cobra Resources Plc, Non - Executive director of Golden State Mining Ltd, King Island Scheelite Ltd , Zeta Petroleum Plc and Strata -X Energy Ltd.
Bruce McCracken Managing Director	Experienced business executive with over 25 years working across a broad range of industries in senior corporate and specialised investment and corporate advisory roles. Previous corporate advisory and M&A focus on mining and natural resources and diversified industrials, and project finance for mining projects. Board member since 2011
John Prineas Non-executive Director	Over 30 years' experience in the resources, banking and legal sectors. In 1994, joined the global German bank Dresdner Bank AG (now Commerzbank AG) in Sydney and served over the next 10 years as General Counsel, Chief Operating Officer and Country Head with a focus on project and acquisition finance for resources and infrastructure projects. Founder, Executive Chairman and shareholder of St George Mining Limited (ASX: SGQ) which completed an IPO in November 2010 and is now recognised as a successful explorer and emerging nickel company
John Dawson Non-executive Director	Extensive experience in the finance and mining sectors, having occupied senior roles with global investment banks including Goldman Sachs and Dresdner Kleinwort Wasserstein. At Goldman Sachs, John was a Managing Director of FICC (Fixed Income, Currency and Commodities) for Australia. At Dresdner Kleinwort Wasserstein, John was Global Head of Commodities as well as Country Head for Australia. John has been a non-executive director of St George Mining Limited (ASX: SGQ) since January 2019

Senior Technical

Ben Pollard Exploration & Development	Ben Pollard is a geologist with more than 20 years' experience in exploration and mining in Western Australia with success in gold exploration, as well as taking projects from resource definition through to production. Since 2015, Ben has been the principal of Cadre Geology and Mining Pty Ltd, providing geological consulting services to a wide range of clients including global majors and small explorers
Charles Wilkinson Technical Consultant	Charles Wilkinson has more than 30 years' experience as a geologist in the mining industry. He worked with WMC Resources for 16 years, holding various senior exploration and operational positions including Exploration Manager - Nickel Exploration Australia, and Geology Manager Hill 50 Gold Mine. After five years as the initial Managing Director of Northern Star Resources Ltd, Mr Wilkinson joined Western Areas Limited in 2008 as General Manager Exploration. Mr Wilkinson now works as a technical consultant in the resources sector

Why Invest ?

✓	Sound Business Strategy	<i>Discovering and developing economic gold deposits in WA</i>
✓	Three WA Projects	<i>Three 100% owned gold projects in exciting regions of Western Australia</i>
✓	Advanced Exploration	<i>Two projects have high-grade gold confirmed by drilling and/or mining, with South Boddington providing an early stage exploration play on a world-class gold belt</i>
✓	Drill Ready	<i>Walk up drill targets to follow-up high-grade gold intercepts</i>
✓	Attractive EV	<i>EV attractive relative to advanced exploration to date, providing strong valuation leverage to potential resource definition and further exploration success</i>
✓	Gold Exposure	<i>US\$2,000 oz barrier broken</i>
✓	Resource Potential	<i>Potential for fast track to resource definition at Abercromby</i>
✓	Refreshed Company	<i>New team members and recapitalisation provide corporate platform to deliver high growth</i>

Contact:
Bruce McCracken
 Managing Director
 +61 8 9424 9390
enquiry@bmgl.com.au

Sean Meakin
 Company Secretary
 +61 8 9424 9390
enquiry@bmgl.com.au