



BMG Resources (ASX: BMG) Chile Lithium Brine

Investor Presentation
February 2019

Entry into the World's Highest-Grade Lithium Brine District





Important Notice and Disclaimer

Exploration Results and Mineral Resources

The information in this report that relates to potential Exploration Results and Mineral Resources has been reviewed by Malcolm Castle, who is a Member of the Australasian Institute of Mining and Metallurgy. Mr Castle has sufficient experience, which is relevant to the style of mineralization and type of deposit under consideration and to the activity, which they are undertaking to qualify as an Expert and Competent Person as defined under the VALMIN Code and in the 2015 Edition of the 'Australasian Code for Reporting of Exploration Results, Mineral Resources and Ore Reserves'. Mr Castle consents to the inclusion in this report of the matters based on the information in the form and context in which they appear. Estimates of aquifer volumes in this report are conceptual in nature.

Forward-Looking Statements

This document may include forward-looking statements. Forward-looking statements include, but are not limited to, statements concerning BMG Resources Limited's planned exploration program and other statements that are not historical facts. Although BMG Resources Limited believes that its expectations reflected in these forward-looking statements are reasonable, such statements involve risks and uncertainties and no assurance can be given that actual results will be consistent with these forward-looking statements.

No Offer of Securities

The information contained in this presentation is for informational purposes only and does not constitute an offer to issue, or arrange to issue, securities or other financial products. The information contained in this presentation is not investment or financial product advice and is not intended to be used as the basis for making an investment decision. The presentation has been prepared without taking into account the investment objectives, financial situation or particular needs of any particular person.

No warranty of accuracy or completeness

No representation or warranty, express or implied, is made as to the fairness, accuracy, completeness or correctness of the information, opinions and conclusions contained in this presentation. To the maximum extent permitted by law, none of BMG Resources Limited, its directors, employees or agents, nor any other person accepts any liability, including, without limitation any liability arising out of fault or negligence, for any loss arising from the use of the information contained in this presentation. In particular, no representation or warranty, express or implied is given as to the accuracy, completeness or correctness, likelihood of achievement or reasonableness or any forecasts, prospects or returns contained in this presentation nor is any obligation assumed to update such information. Such forecasts, prospects or returns are by their nature subject to significant uncertainties and contingencies.

BMG Snapshot

Transformational Lithium Opportunity

- BMG focuses on strategic minerals investment opportunities
- Battery minerals – lithium and cobalt – identified as high priority targets
- Transformational JV opportunity secured in the world's best lithium district
 - ✓ Atacama district, Chile, is host to the world's highest grade, lowest cost lithium operations
 - ✓ Over 20,000 hectares across three project areas
 - ✓ Strong local partner has delivered an increase in area by 70% in recent weeks, with additional opportunities likely
- Lithium outlook remains highly attractive
- Chile is a stable jurisdiction with a well-established mining regime
- BMG is well-positioned for value creation:
 - ✓ Lithium peers indicate value potential
 - ✓ Current market valuation of <\$4m offers significant upside
 - ✓ Cash with low overheads to deliver project value

BMG Capital Structure

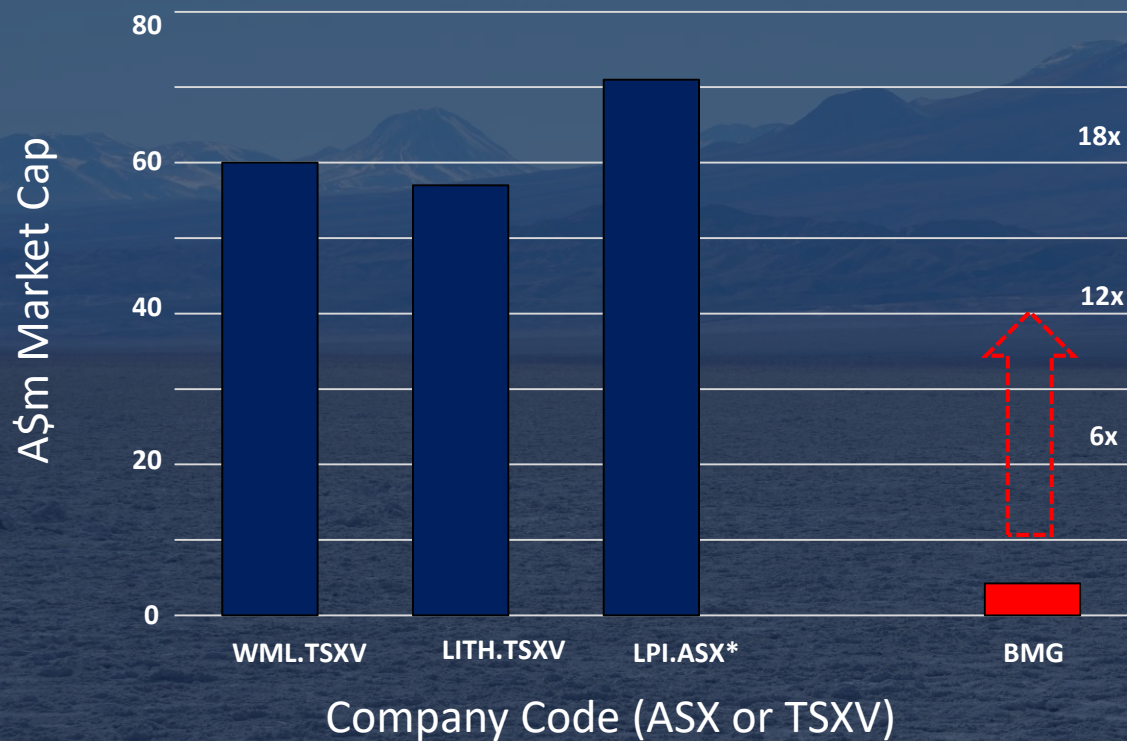
(As at 20 February 2019)

Shares – ordinary issued	489m
Options outstanding (June 19 @ \$0.02)	263m
Market Capitalisation at 0.8c/share	\$3.9m
Debt	\$0.0m
Cash	\$1.6m
Stock Code	ASX: BMG
Top 20 Shareholders	64%



Sector Comps – Strong Value Upside

Chilean Lithium Comps: Strong Growth Potential



- Chilean-focused ASX/ TSXV small-cap Li players have delivered strong value upside over the past few years
- Trend continues for other players in the 'Lithium triangle' (Chile/Argentina/Bolivia)
- Fundamental value in sector has seen some spectacular gains
- BMG entry at very modest value (market cap circa \$4 million) indicates significant upside potential



Lithium Sector – Driven by Strong Fundamentals

3

Li

Lithium
6.941

Lightest metal in the
periodic table

High operating voltage and
high energy storage density

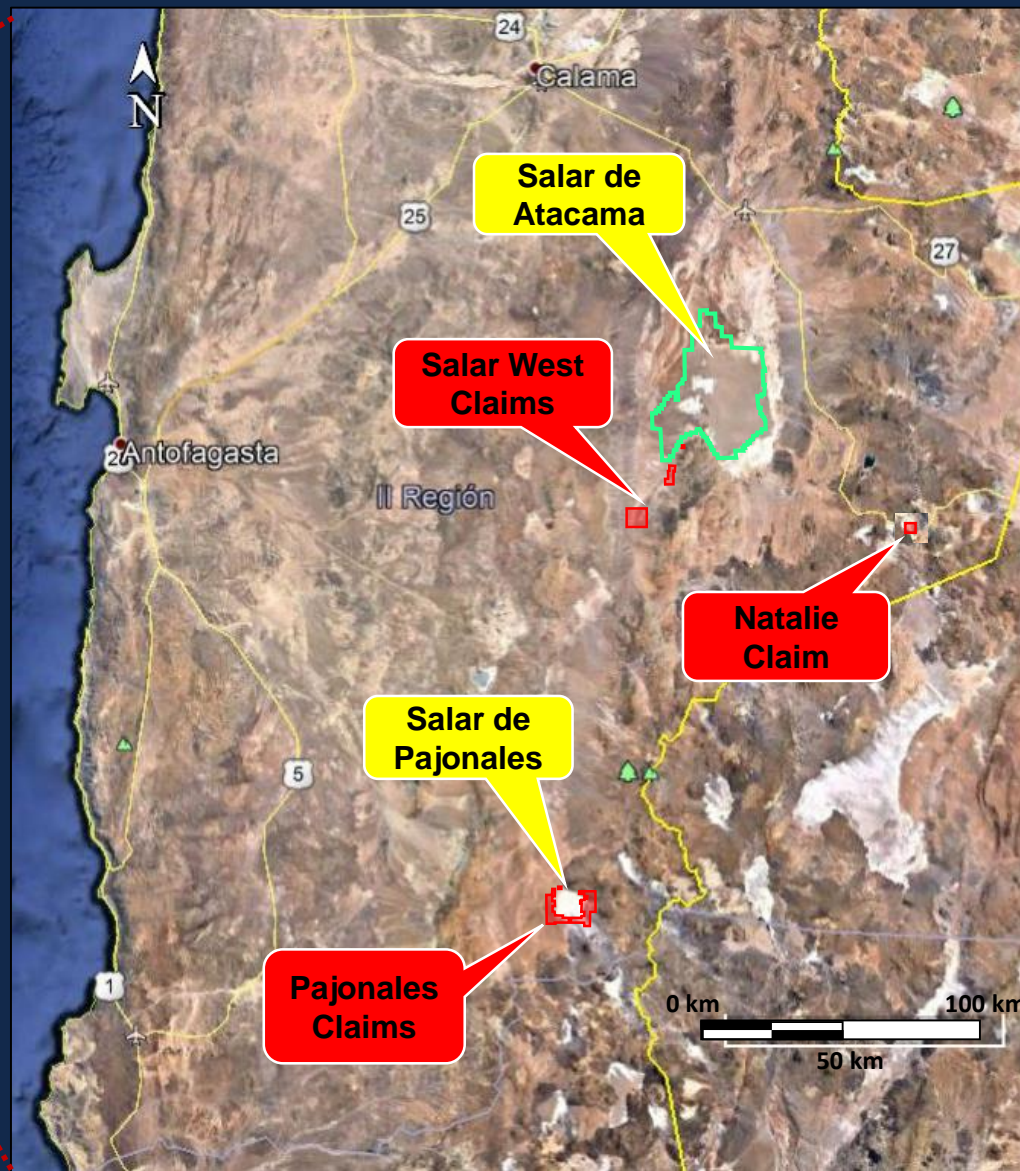
Perfect for batteries
– light and energetic

- Strong Li price growth over recent years has been driven by battery demand growth for Electric Vehicles (EVs) and energy storage
- Decline in battery costs and higher energy density, without Li price pressure (represents small % of battery cost), is driving significant Li demand growth
 - ✓ EV driven demand for Li expected to increase more than threefold by 2025 (*McKinsey 2018*)
 - ✓ Battery costs have decreased by over 75% since 2010 to USD\$230/kWh in 2017
 - ✓ McKinsey estimate a tipping point at USD\$100/kWh when EVs will be cheaper than ICE cars, likely by 2025

BMG's Chilean Lithium Brine Properties

The world's best lithium province

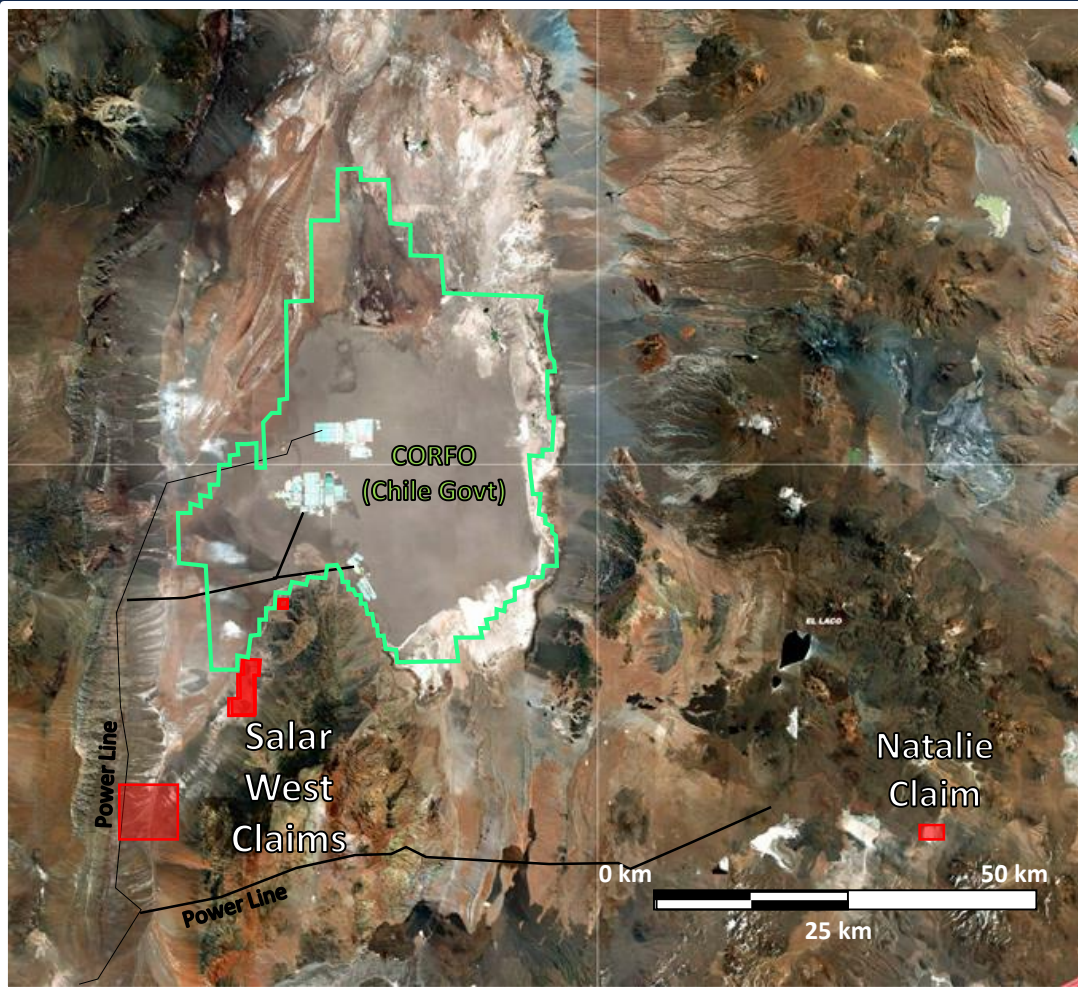
BMG claims:



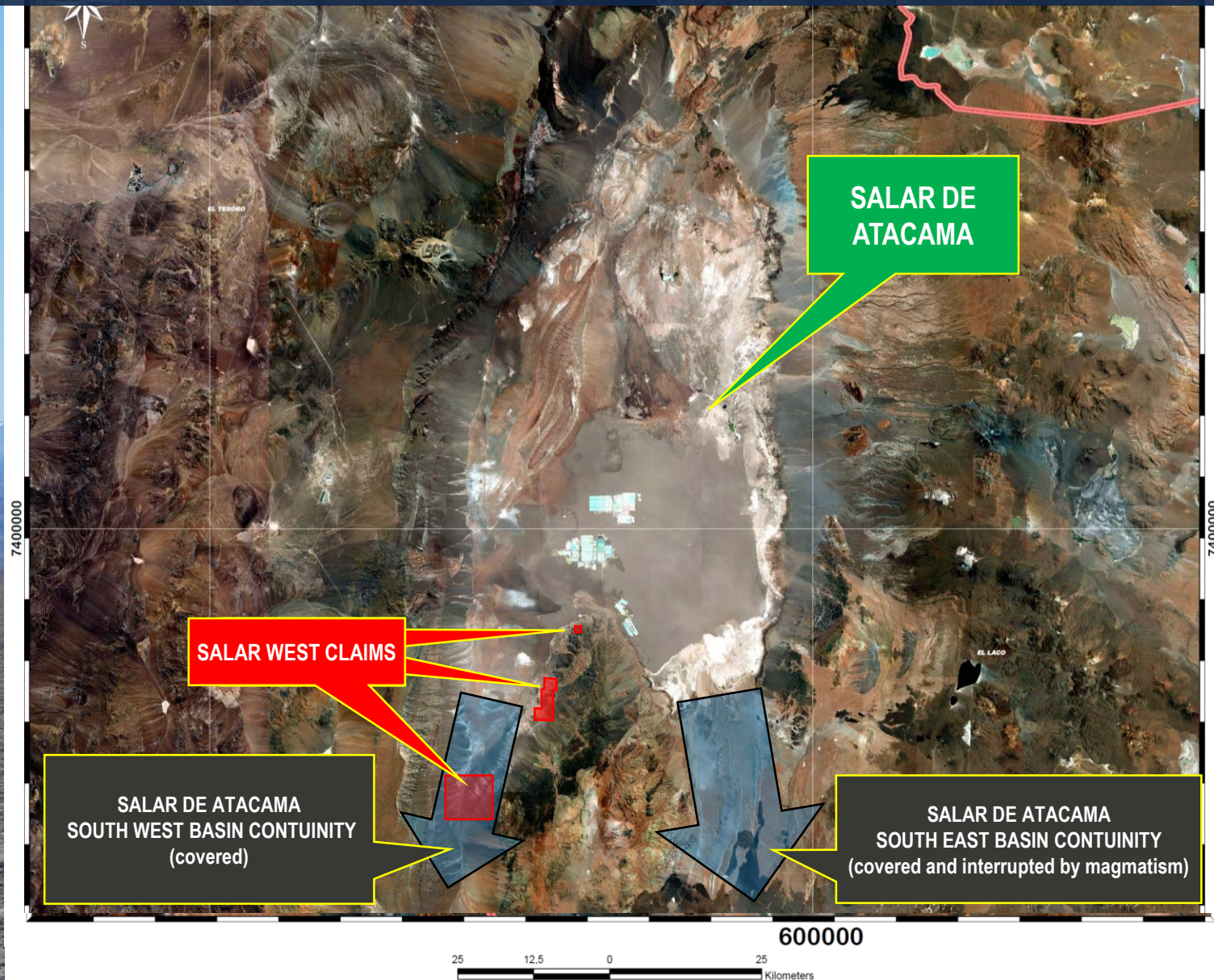
Salar de Atacama

Highest grade, lowest cost lithium source in the world

- The *Salar de Atacama* is the world's largest and purest active source of lithium
- Contains c. 27% of global lithium reserves
- CORFO – Chilean Economic Development Agency – holds significant area but is not a producer
- SQM – the world's largest lithium producer – is adjacent to BMG's Salar West claims on SQM's southern extension
- Albemarle is active nearby as a major lithium producer, holding a lease from CORFO to produce 60k tpa of Li carbonate

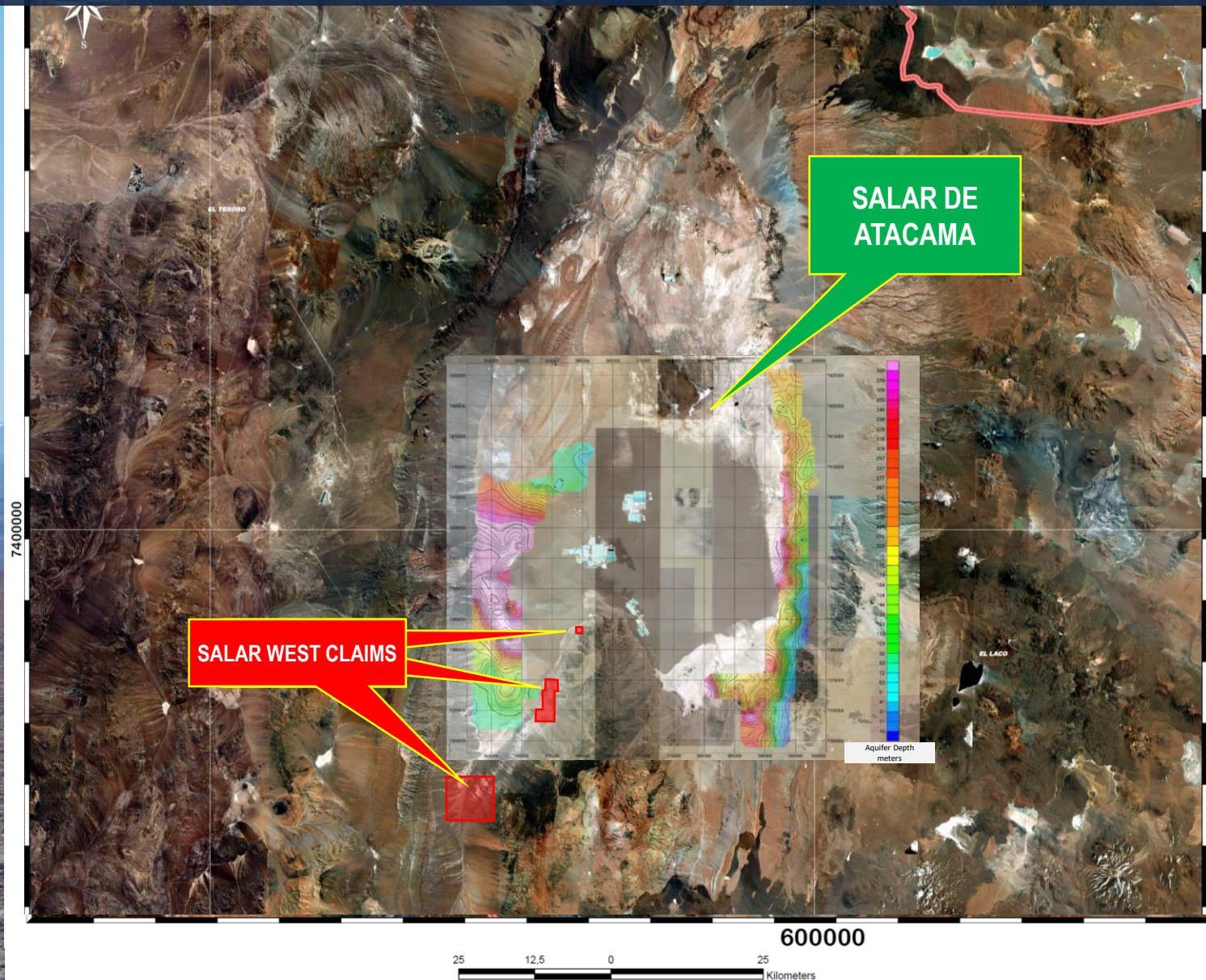


Salar de Atacama – Exploration Hypothesis



- The geomorphology of the Salar de Atacama's basin has an ancient origin and its original size was larger than the current salar "eye"
- Volcanism (Li source) and evaporative climate regime (Li concentration in brines) have been very active in the region since early Miocene times (25 million years ago)
- The South Western and Eastern boundaries of the Salar of Atacama are constrained by recent volcanic and alluvial deposits (dated up to 3.2 My)
- Given the ancient origin and the basin geomorphology, it is a sedimentary filling and the hosted rich Li brine aquifer has continuity beneath the recent volcanic and alluvial coerture to the South West (Salar West) and South East basins

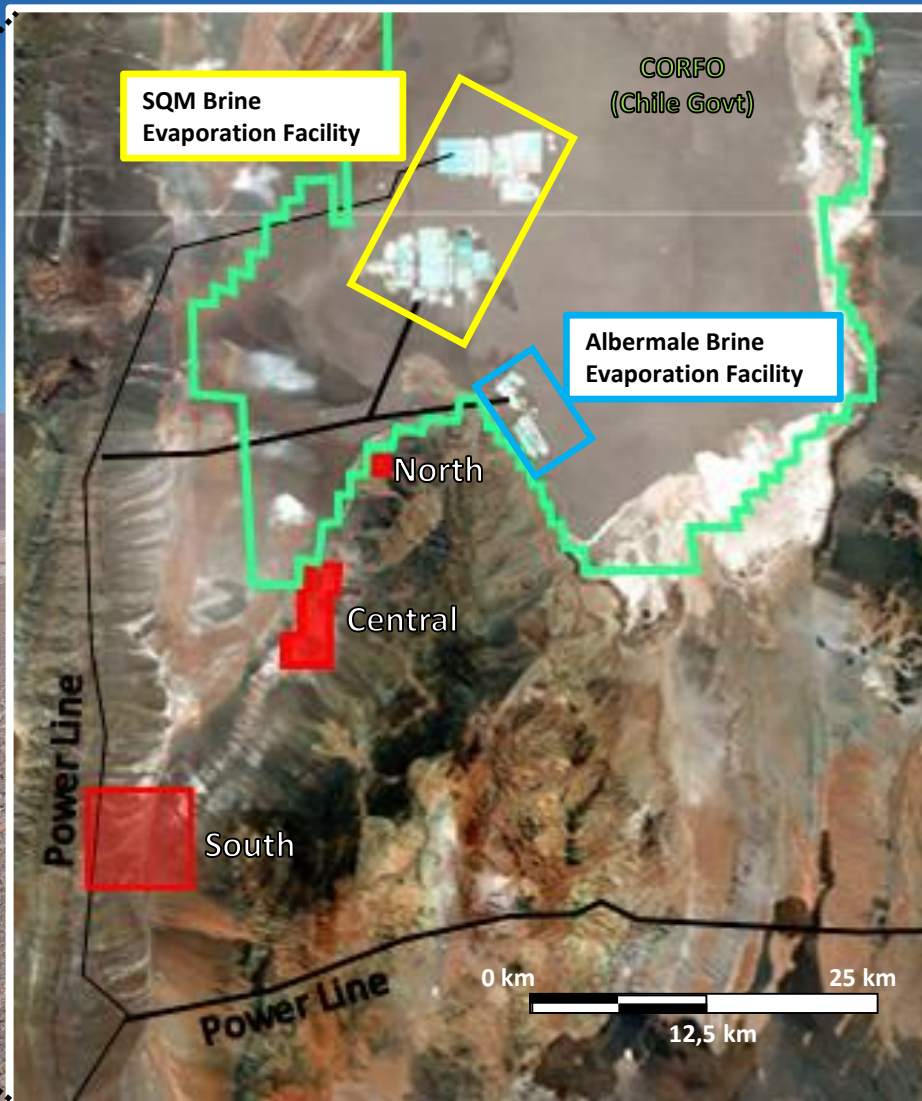
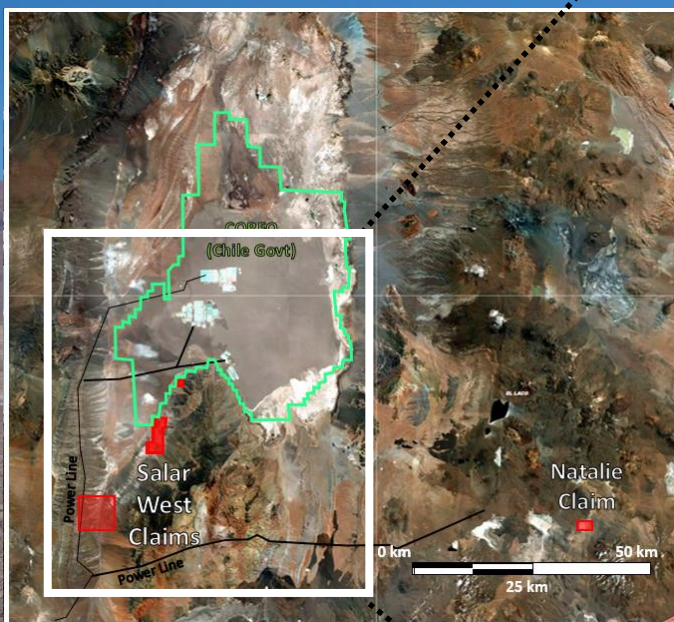
Aquifers adjacent to Salar West



- Previous environmental and geological studies on adjacent areas to Salar West highlight extent of aquifers
- The aquifer depths are derived from geophysics (TEM, 2011) and historical data from drilled production – monitoring wells
- Data suggests target aquifers on Salar West claims from around 100m from surface

Salar de Atacama - Salar West

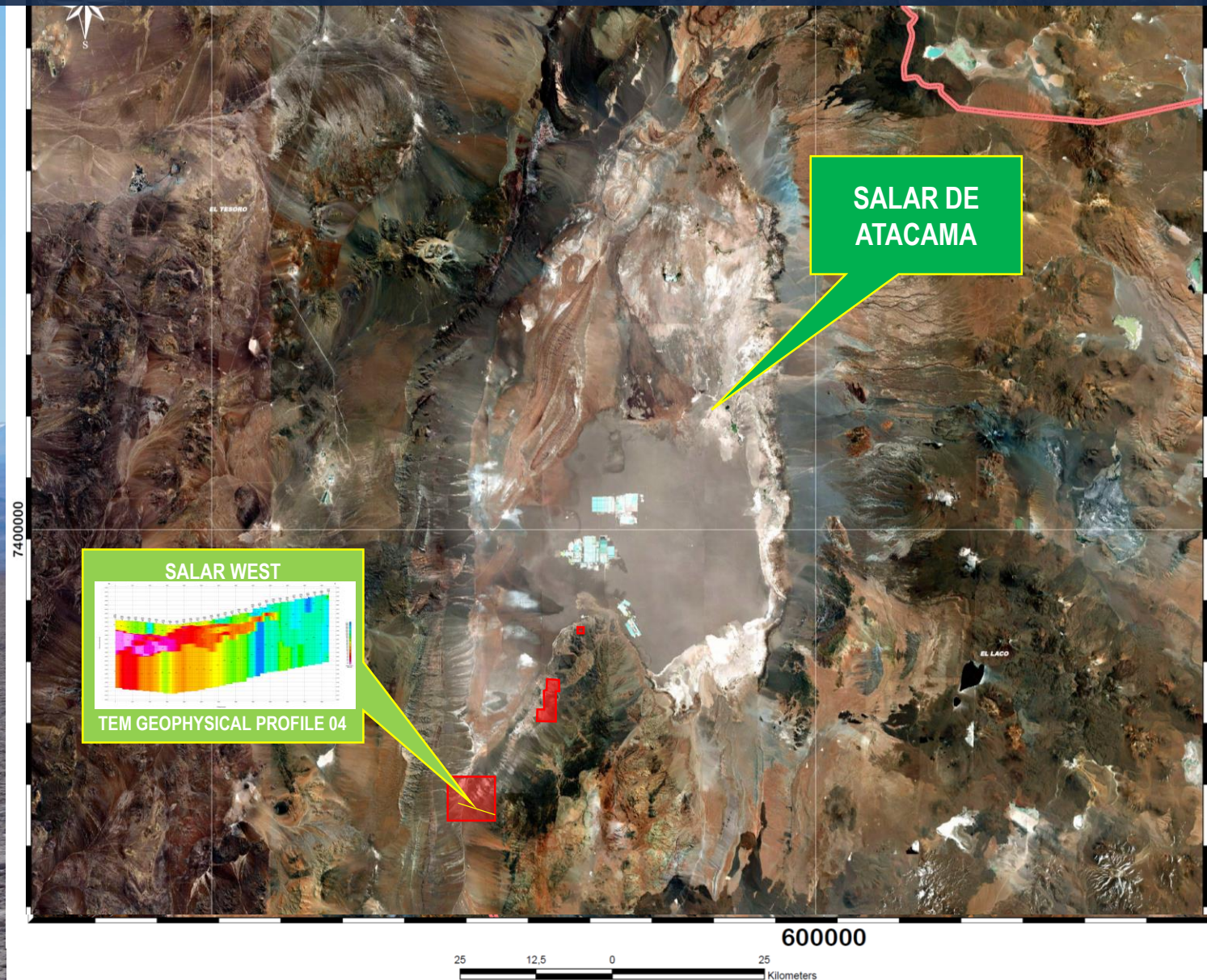
Three areas – North, Central and South



- Salar West claims – 8,000 Ha
- Adjacent to SQM's Li-K operations
- Located in the salar basin continuity
- Geophysics performed in Central and Southern areas

Exploration hypothesis supported by preliminary geophysics

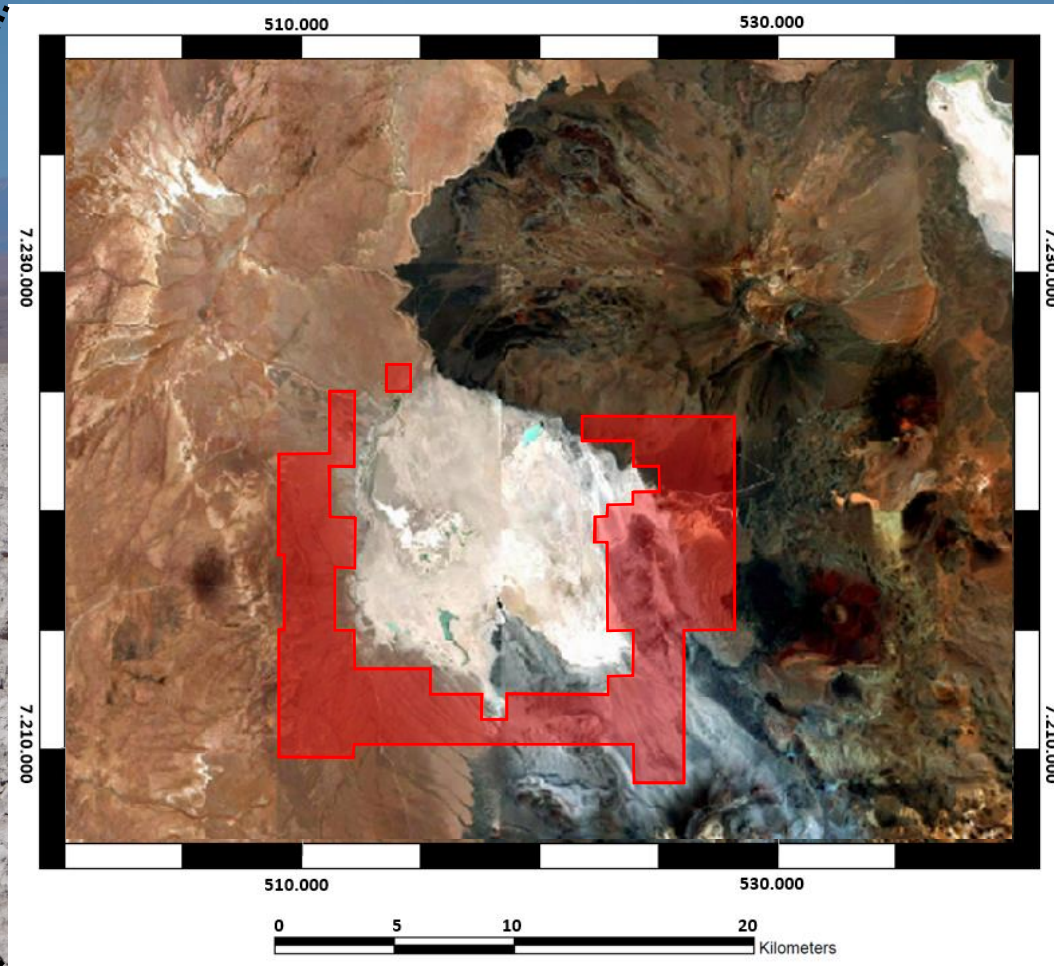
11



- Recent transient electromagnetic geophysics (TEM) completed at Salar West Central and South claims
- Results indicate a very low resistivity zone (pink) between a moderate resistivity zone (red/yellow), both beneath a high resistivity layer (cyan/green) in the South claims
- This resistivity pattern supports the exploration hypothesis, indicating a potential brine aquifer hosted on saturated sediments below a dry rock – sedimentary layer
- The low resistivity zone (potential brine aquifer - pink) has an estimated size of 650 to 700 million cubic metres (3D modelling)
- Drilling is required to fully validate the exploration hypothesis and establish Li resources

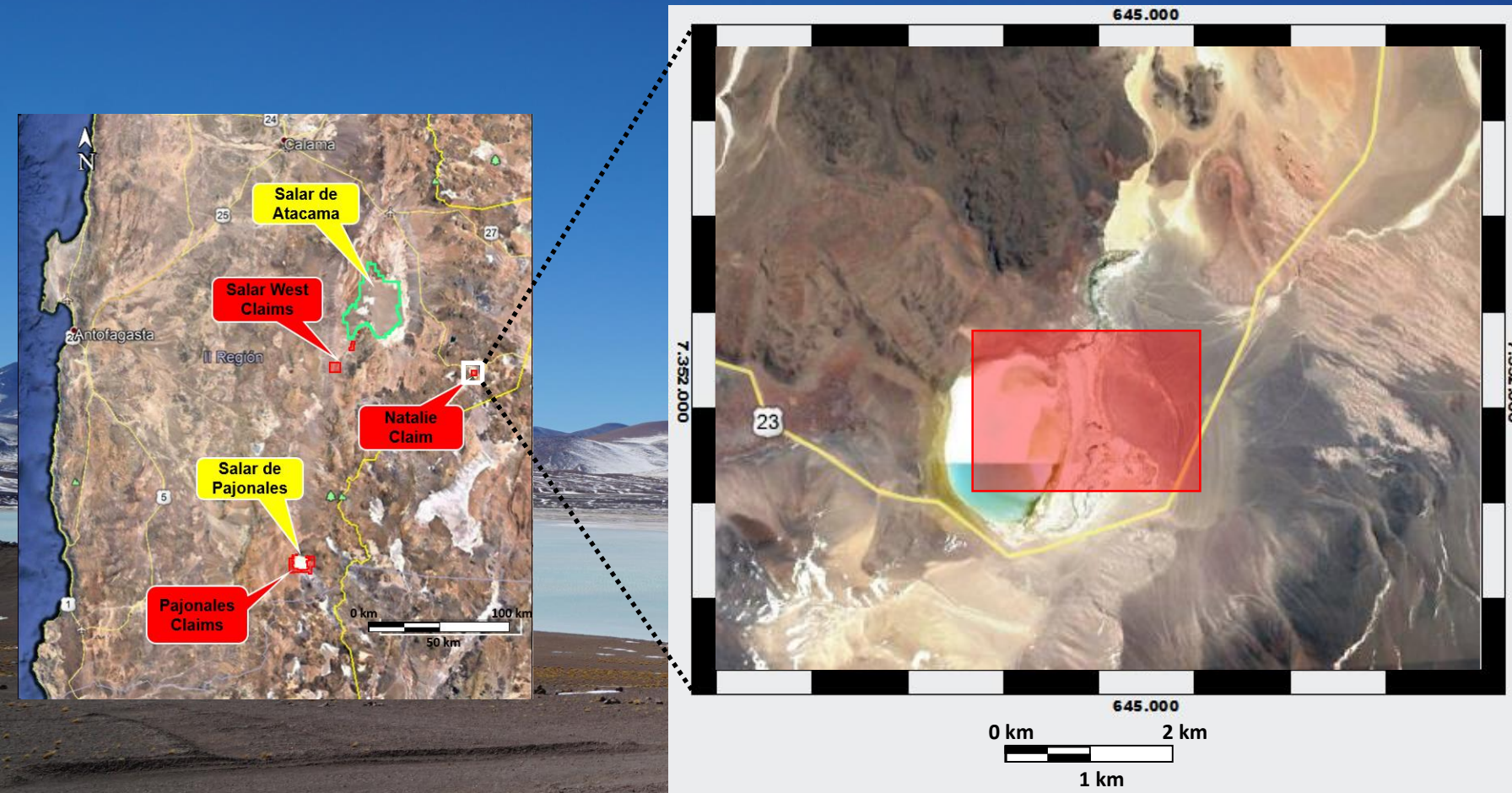
Salar de Pajonales – Pajonales Claims

- Pajonales claims – 11,500 Ha, with further areas under review
- Salar de Pajonales has high grade Boron borates and halite deposits
- Boron enhances potential economics and indicates strong Lithium potential
- Geophysics proposed to be undertaken shortly



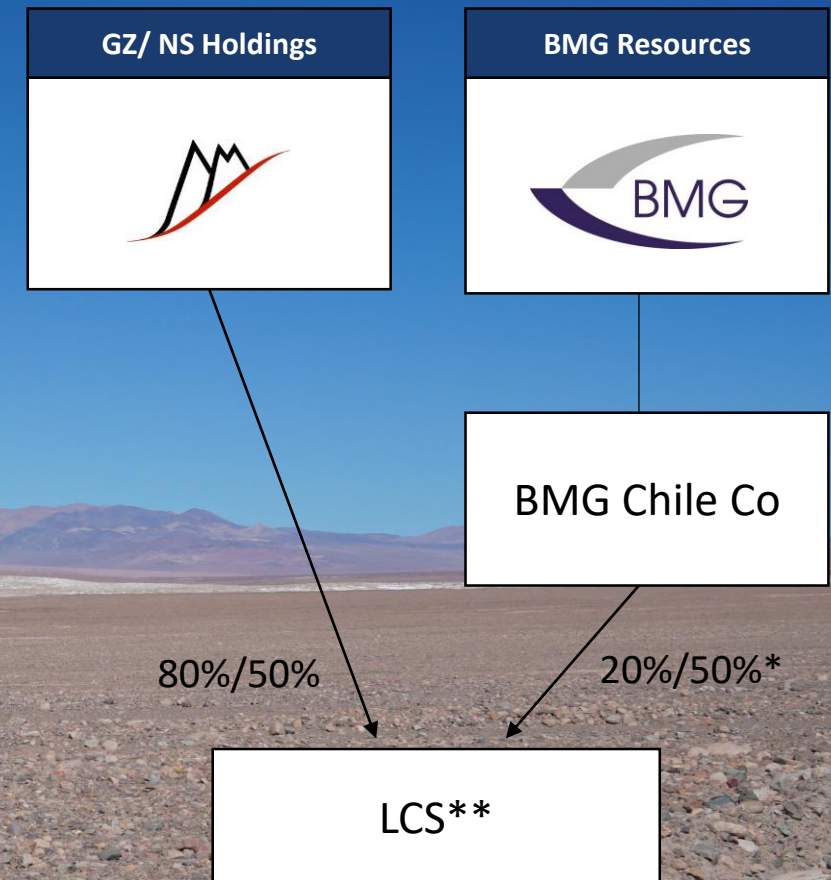
Salar de Tuyajto – Natalie Claim

- Natalie claim – 600 Ha
- Claim area covers most of the brine rich salar
- Samples at surface currently being analysed
- Geophysics to delineate depth and size of aquifer to commence in early 2019



Proactive JV Partners

- BMG has secured a strategic business alliance for lithium brine exploration and development with Lithium Chile SpA and its owners (“LCS”)
- LCS are experienced Chilean geologists who have assumed a key role in sourcing and delivering additional exploration and development opportunities for BMG, and will provide management and operational services
- BMG expects LCS to continue to provide attractive opportunities to add to the exploration portfolio, having recently increased BMG’s acreage by 70% at no additional cost
- Binding and exclusive agreement executed, subject to satisfactory due diligence enquiries and any shareholder and regulatory approvals
- US\$100,000 paid to the vendors for exclusive option period. BMG recently negotiated a revision to defer US\$450,000 in vendor progress payments and enable more near term investment into the Lithium Properties



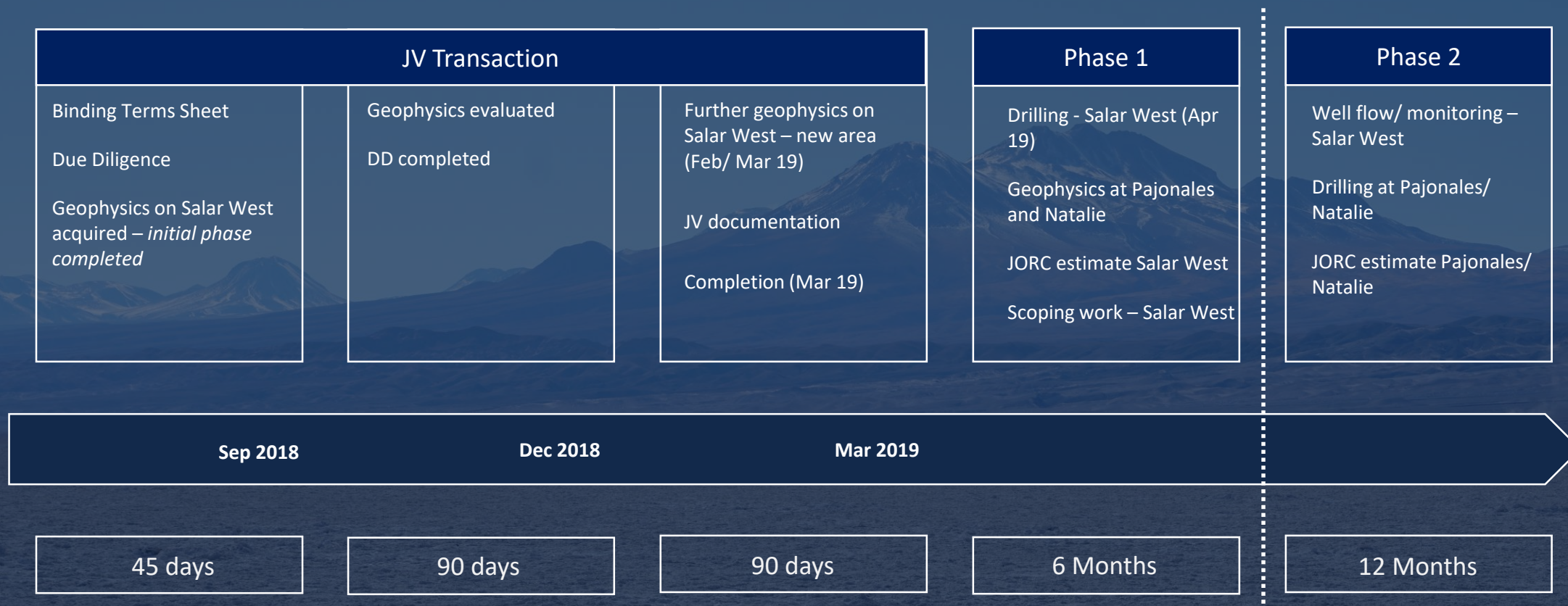
* Initial 20% interest acquired for US\$0.7m cash/ scrip consideration and US\$1m work commitment, with US\$1.5m additional work commitments and US\$0.3m cash/scrip to earn a further 30% interest
 **Chilean SPV holding 100% of Lithium properties

Newly Improved JV Terms

- New JV entity in Chile (“LCS”) will own the assets and operate the venture. BMG will acquire/earn up to a 50% interest in the JV for US\$3.5 million over 3 years, with key milestones:
 - Completion: BMG will pay US\$250,000 in cash, then will earn up to 50% over 3 years
 - Year 1: BMG will fund US\$1 million on the Lithium Properties, then pay US\$250,000 in cash and US\$200,000 in shares to earn 20% in the JV Company
 - Year 2: BMG will earn an additional 15% interest in the JV Company by funding US\$1.0 million on the Lithium Properties, and paying an additional US\$150,000 in cash or shares (at BMG’s election)
 - Year 3: BMG will earn an additional 15% interest in the JV Company by funding US\$0.5 million on the Lithium Properties, and paying an additional US\$150,000 in cash or shares (at BMG’s election)



Lithium Brine JV – Development Timeline



BMG – Board

17



Greg Hancock

CHAIRMAN

BA (Econs), B.Ed (Hons), F.Fin

Over 25 years of capital markets experience in Australia and the UK. Specialist areas of mining and natural resources and the finance and management of small companies. Joined the board in February 2017, and is currently chairman of Ausquest Limited, and non-executive director of Zeta Petroleum Plc, Strata X Energy Limited, Golden State Mining limited and Cobra Resources Limited.



Bruce McCracken

MANAGING DIRECTOR

Bcom, LLB, MBA, GAICD

Experienced business executive with over 20 years working across a broad range of industries in senior corporate and specialised investment and corporate advisory roles. Previous specialist corporate advisory and M&A focus on mining and natural resources and diversified industrials, and project finance for mining projects. Has practiced as a solicitor in banking and finance, and worked in the private equity sector. Joined the BMG board in July 2011 and is currently a director of AssetOwl Limited (previously Regalpoint Resources Limited).



Simon Trevisan

DIRECTOR

BEc, LLb (Hons), MBT

Managing Director of Tribis and Iris Residential. Significant experience in the promotion and management of public companies, particularly in mining and oil and gas. Joined the board in April 2016, and is currently a non-executive director of AssetOwl Limited, Zeta Petroleum Limited and Neurotech Limited.



Malcolm Castle

DIRECTOR

BSc (Hons), GSertAppFin (Sec Inst), MAusIMM

Over 40 years experience in exploration geology and mining project evaluation and development. Extensive experience across all major minerals classes. Member of AusIMM and a 'Competent Person' and 'Expert' for JORC and 43-101. Joined the board in November 2010.



Peter Munachen

DIRECTOR

FCAANZ, FAICD

Over 45 years of management and corporate administration experience of public companies, particularly in the mining and exploration sectors. Previously CEO and director of Norwest Energy NL, and a qualified chartered accountant. Joined the board in January 2018.

Investment Highlights

- BMG's tenements are located within the world's highest-grade lithium brine district in close proximity to the world's largest lithium producers
- Strong local partner (LCS) are mining specialists expected to continue to provide attractive opportunities to add to the exploration portfolio
- Drill-ready targets identified, additional acreage acquired and drilling set to commence Q2 CY19
- Chile is a safe and stable jurisdiction with a well-established mining regulatory regime
- Significant disconnect between strong ground position and extremely low market capitalisation presents scope for investor value creation
- BMG provides investors with exposure to the right commodity, with the right partner, in the right location at the right time

Contact:

Bruce McCracken

Managing Director

+61 8 9424 9390

enquiry@bmgl.com.au

Tim Dohrmann

Investor Relations

+61 (0) 468 420 846

tim@nwrcommunications.com.au

