



High-Grade Gold in Western Australia

IMARC Sydney
November 2022

BMG Resources Limited
ACN 107 118 678
ASX:BMG



Important Notice & Disclaimer

Exploration Results

The information in this presentation that relates to potential Exploration Results and Mineral Resources has been reviewed by Ben Pollard, who is a Member of the Australasian Institute of Mining and Metallurgy. Mr Pollard has sufficient experience, which is relevant to the style of mineralisation and type of deposit under consideration and to the activity, which they are undertaking to qualify as an Expert and Competent Person as defined under the VALMIN Code and in the 2015 Edition of the 'Australasian Code for Reporting of Exploration Results, Mineral Resources and Ore Reserves'. Mr Pollard consents to the inclusion in this presentation of the matters based on the information in the form and context in which they appear.

Forward-Looking Statements

This document may include forward-looking statements. Forward-looking statements include, but are not limited to, statements concerning BMG Resources Limited's planned exploration program and other statements that are not historical facts. Although BMG Resources Limited believes that its expectations reflected in these forward-looking statements are reasonable, such statements involve risks and uncertainties and no assurance can be given that actual results will be consistent with these forward-looking statements.

No Offer of Securities

The information contained in this presentation is for informational purposes only and does not constitute an offer to issue, or arrange to issue, securities or other financial products. The information contained in this presentation is not investment or financial product advice and is not intended to be used as the basis for making an investment decision. The presentation has been prepared without taking into account the investment objectives, financial situation or particular needs of any particular person.

No Warranty of Accuracy or Completeness

No representation or warranty, express or implied, is made as to the fairness, accuracy, completeness or correctness of the information, opinions and conclusions contained in this presentation. To the maximum extent permitted by law, none of BMG Resources Limited, its directors, employees or agents, nor any other person accepts any liability, including, without limitation any liability arising out of fault or negligence, for any loss arising from the use of the information contained in this presentation. In particular, no representation or warranty, express or implied is given as to the accuracy, completeness or correctness, likelihood of achievement or reasonableness or any forecasts, prospects or returns contained in this presentation nor is any obligation assumed to update such information. Such forecasts, prospects or returns are by their nature subject to significant uncertainties and contingencies.

Three 100% owned gold projects in Tier 1 mining jurisdiction

Abercromby Project

- High grade gold project with significant potential
- Targeting maiden Mineral Resource at the Capital Prospect
- 2022 diamond drilling doubles mineralised envelope
- Regional drilling delivers pipeline of targets for follow up

Invincible Project

- +12.5km eastern extension of Warrawoona Shear Zone which hosts the growing 1.5m oz Au resource of Calidus Resources (ASX: CAI)
- Multiple high-priority gold targets identified
- Li pegmatite potential currently being assessed

South Boddington Project

- Under explored ground along strike from the giant Boddington deposit (+40m oz Au deposit) – Exploration Licences granted and under application



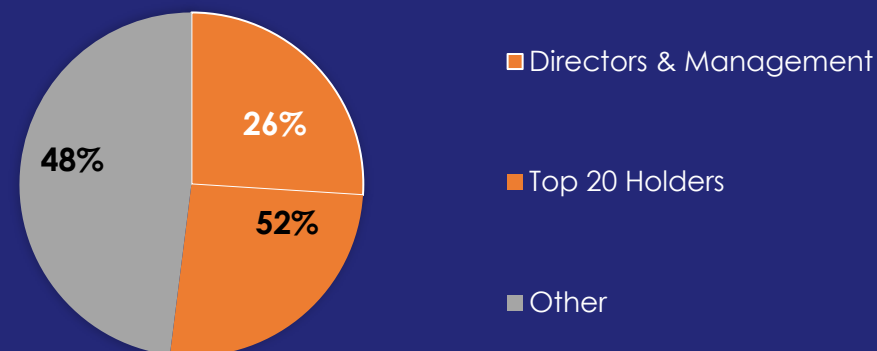
Corporate Snapshot

BMG Resources (ASX: BMG) is an ASX-listed gold exploration company developing its three 100% owned gold projects, located in Tier 1 and emerging Western Australian gold districts – Abercromby, Invincible and South Boddington.

BMG is targeting a maiden mineral resource at its flagship Abercromby Project, located on the Agnew-Wiluna Greenstone Belt.

Capital structure

ASX CODE	BMG
MARKET CAPITALISATION	\$8.1M
LISTED SHARES	385,991,658
TOP 20 SHAREHOLDERS	52%
LISTED OPTIONS	NIL
DIRECTORS AND MANAGEMENT	26%
SHARE PRICE (31 October 2022)	\$0.021
CASH (end September Quarter)	\$1.2M
DEBT	NIL



Leadership Team

BOARD

Greg Hancock	Chairman
Bruce McCracken	Managing Director
John Prineas	Non-executive Director
John Dawson	Non-executive Director

SENIOR TECHNICAL

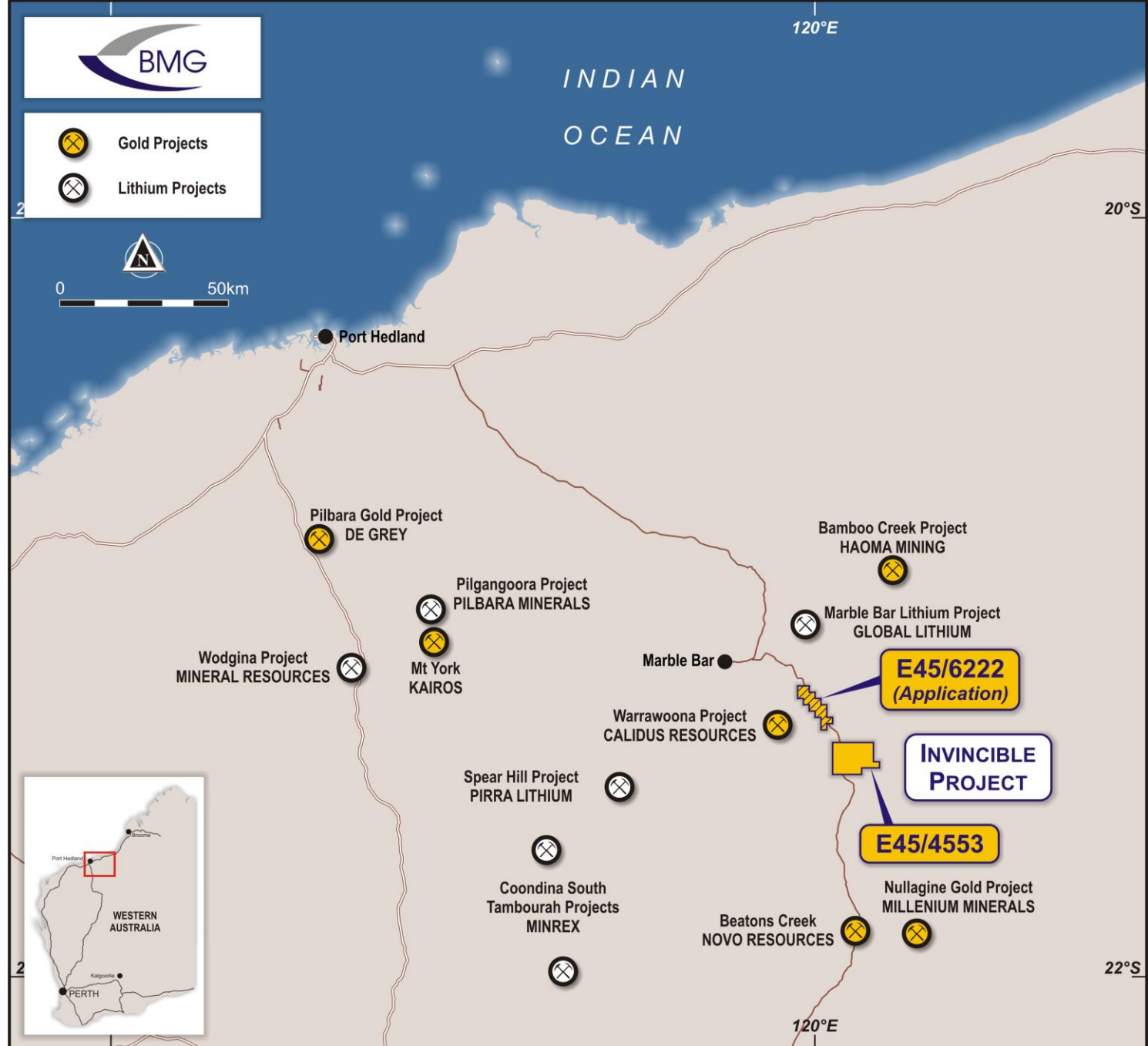
Ben Pollard	Exploration & Development
Charles Wilkinson	Technical Consultant



Invincible Project

Located in emerging gold and lithium district of Central Pilbara

- Immediately along strike from, and hosted by the same stratigraphy, as Calidus Resources' (ASX: CAI) 1.5Moz Au resource – now in development
- Hosts 12.5km of the Warrawoona Shear Zone – the mineralised trend that hosts the Calidus gold resource
- Multiple, small artisanal workings including the historic Invincible mine, where 19.31kg of gold was mined at a grade of 1,380g/t Au
- Little systematic modern exploration with outstanding opportunity for a new high-grade discovery
- Growing number of Li projects in the district indicates potential for Li bearing pegmatites at Invincible – field work currently underway to evaluate the potential, with new area under application

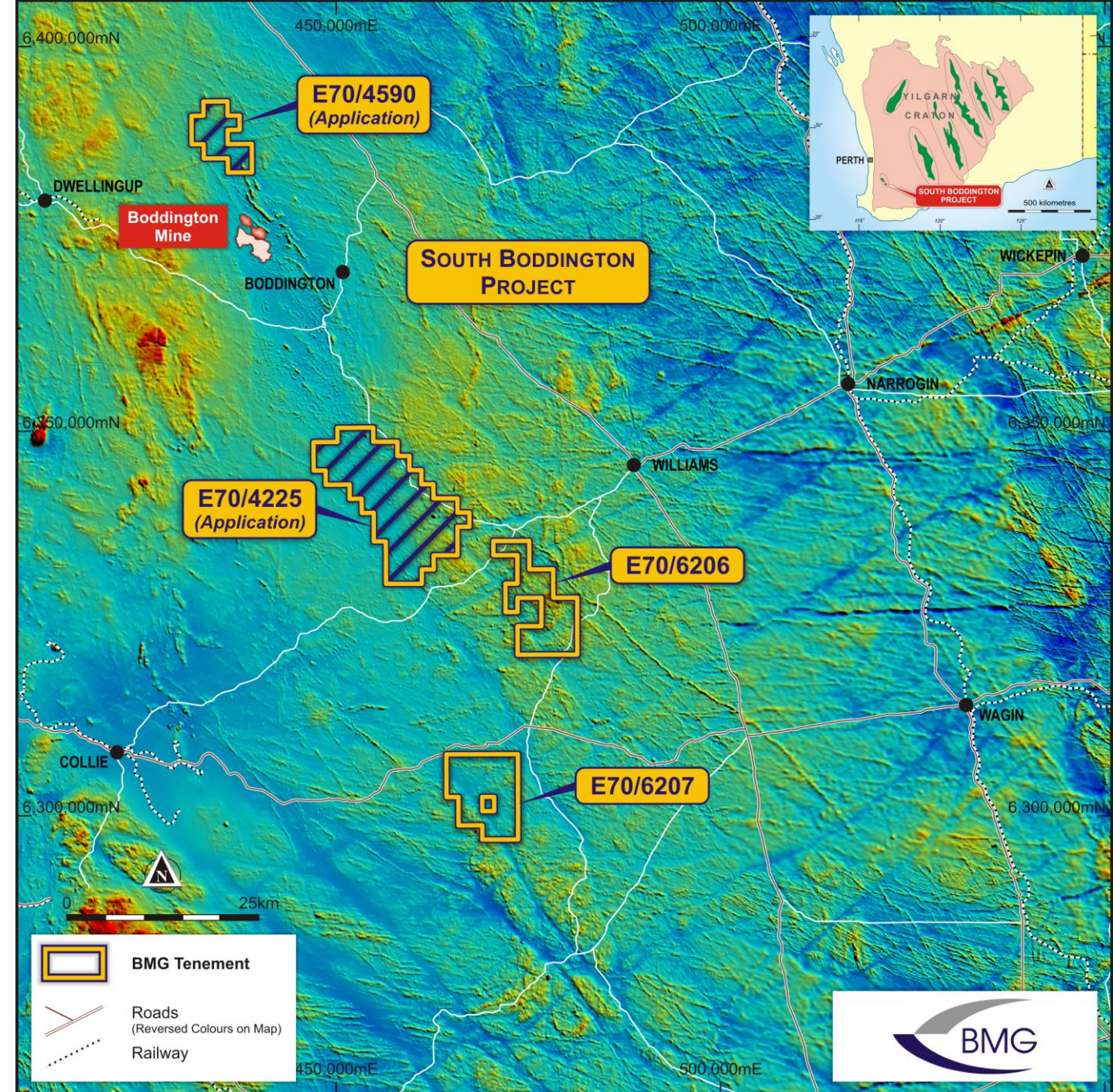




South Boddington Project

Located along strike from the giant Boddington gold deposit (+40Moz Au)

- Project area comprises ground that is within the Saddleback Greenstone Belt which hosts Newmont's (NYSE: NEM) Boddington gold mine
- Strong potential for additional gold deposits along the Belt with most of the Belt unexplored or underexplored
- Two recently granted ELs/ Two application ELs - interpreted to host similar stratigraphy to Boddington
- Boddington is located in an area of magnetic low and similar magnetic lows are seen in BMG's tenements – refer map with GSWA magnetic data



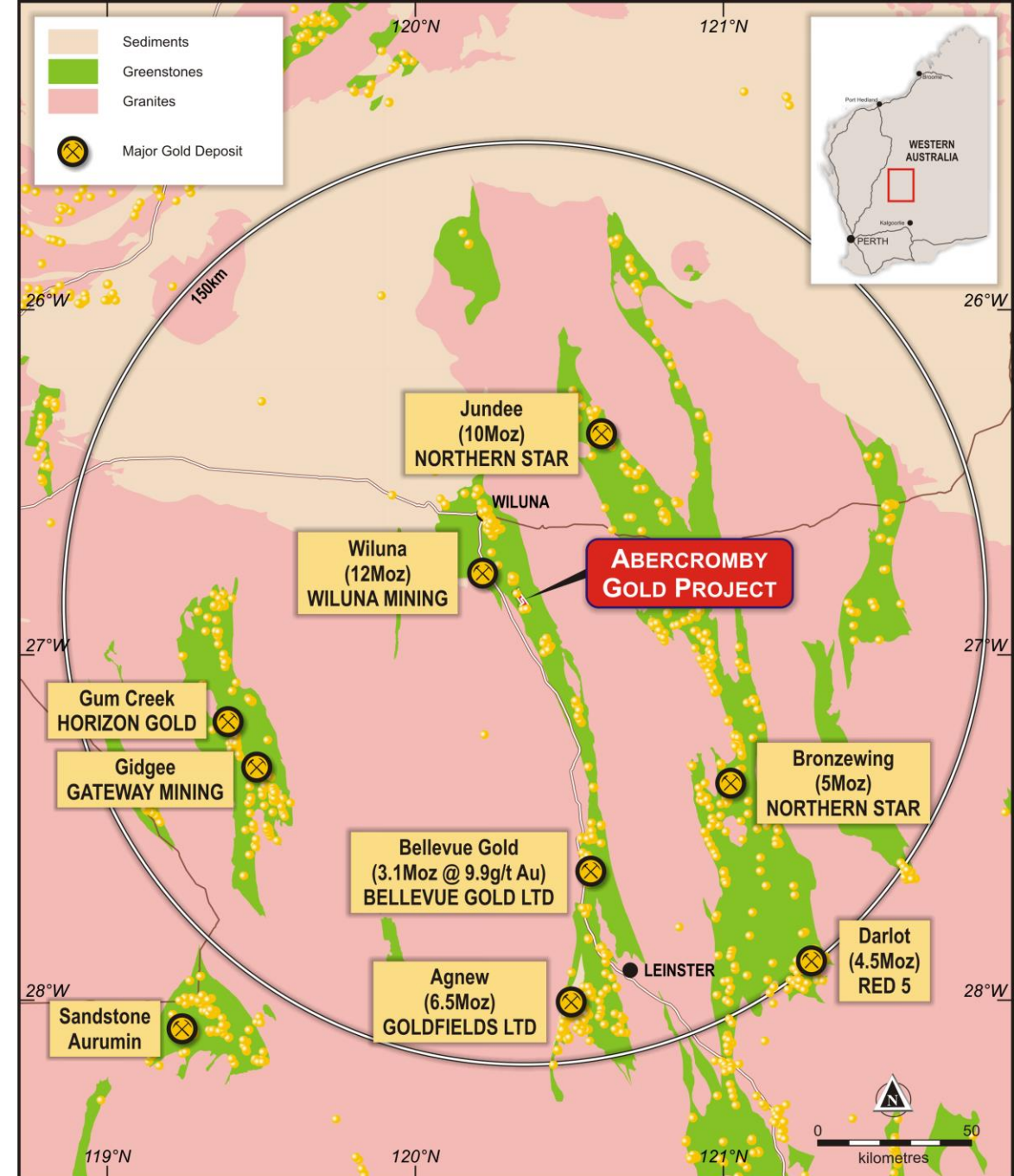
Abercromby Project



Abercromby Project

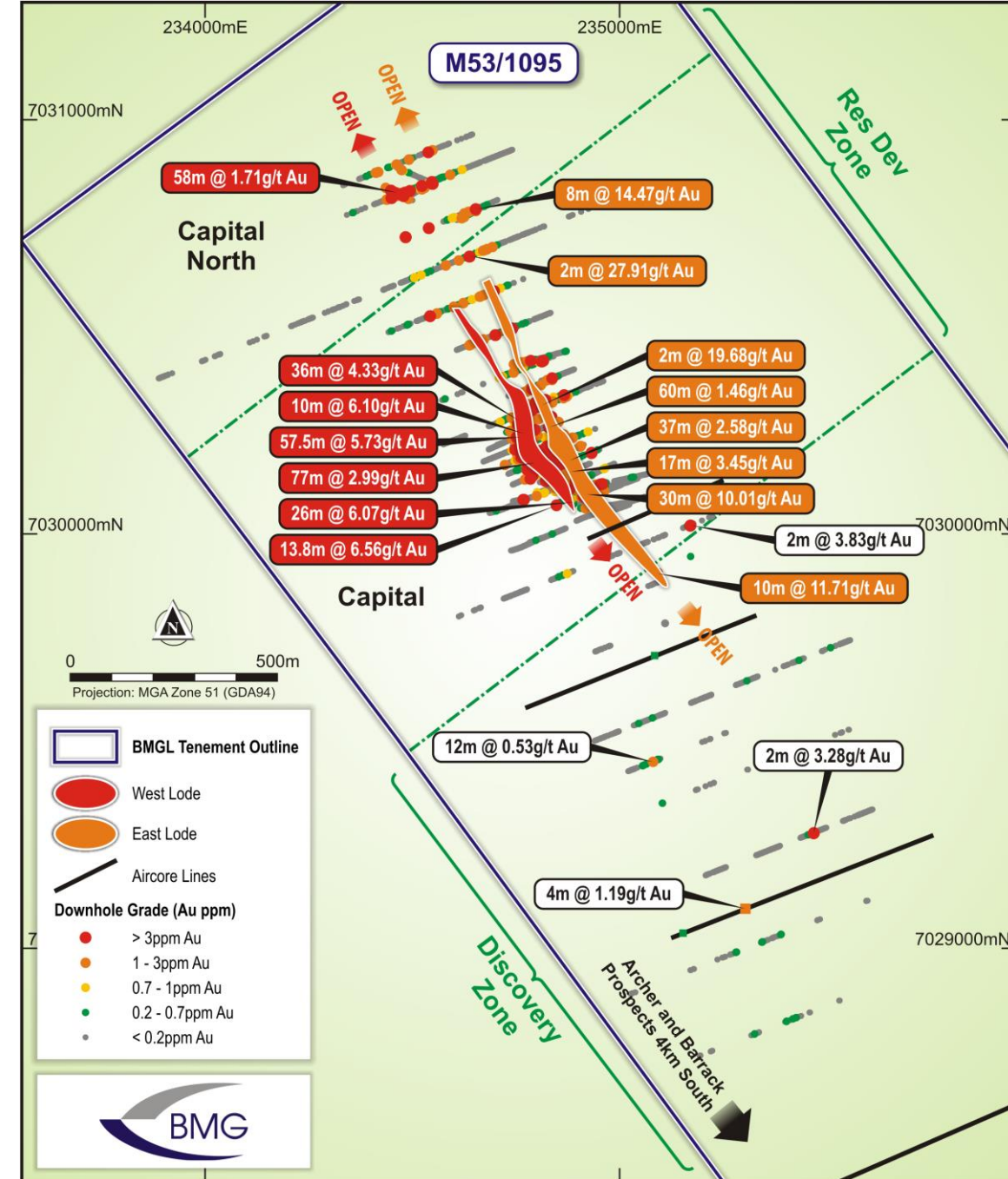
Located in significant gold producing region: Agnew-Wiluna Greenstone Belt endowment (+40M oz Au), second only to Kalgoorlie in WA

- Two granted mining leases with BMG holding exclusive gold and other mineral rights (ex-uranium)
- Mineralisation remains open with potential for repetition of gold lodes along a 6km strike of mineralisation
- Excellent geology and free milling gold confirmed by preliminary metallurgical testwork – further Metwork underway
- Proximal to regional operating plants
- Targeting maiden Mineral Resource at the Capital Prospect
- Regional exploration delivering pipeline of new targets to the south of Capital – Archer, Barrack and Capital South



Targeting maiden Mineral Resource

- Emerging large, high-grade gold prospect
- Extensive mineralised system, with numerous high-grade intersections following second major drilling campaign (results announced April 2022)
- Latest DD results imminent (~4,000m 7 hole program)
- Known mineralisation ~ 1.5km, open in all directions
- Numerous north-west trending mineralized shear zones (lodes)
- East lode opens up an area for significant extension of the mineralised corridor, with West Lode still to be tested
- Step-out drilling to the north of Capital continues to intersect gold mineralisation
- Potential to increase the strike of mineralisation at Capital and Capital North to more than 2km



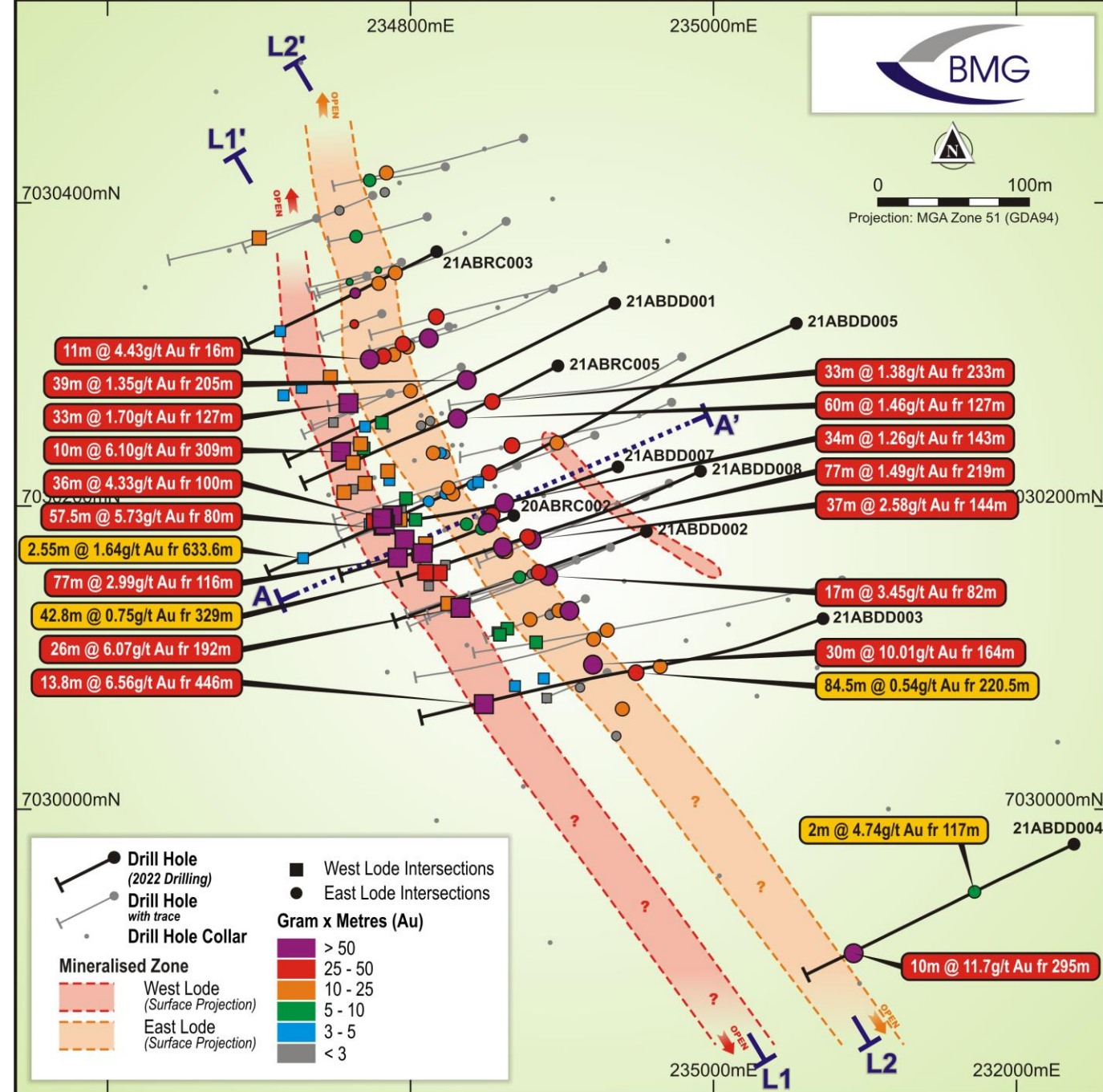


Abercromby Project

Capital Prospect – Drilling doubles mineralised envelope

- 2022 DD more than doubled the mineralised envelope and substantially enhanced the resource potential
- New significant intersections of thick, high-grade gold:
 - 31m @ 6.18g/t Au from 162m (20ABRC0002), and part of a broader 77m @ 2.99g/t Au from 116m
 - 10m @ 11.71 g/t Au from 295m (21ABDD004)
 - 13.8m @ 6.56 g/t Au from 446m (20ABRC0002)
 - 39m @ 1.35 g/t Au from 205m (21ABDD001)
- East lode opens up an area for significant extension of the mineralised corridor, with West Lode still to be tested
- Step-out drilling to the north of Capital also continues to intersect gold mineralisation
- Potentially increases the strike of mineralisation at Capital and Capital North to more than 2km

Plan view of Capital Project showing interpreted lode positions and East and West Lode drill intercepts as gram-metre points and significant intercepts labelled. Section A-A' and Long Sections L1-L1' and L2-L2' are shown in the following slides.

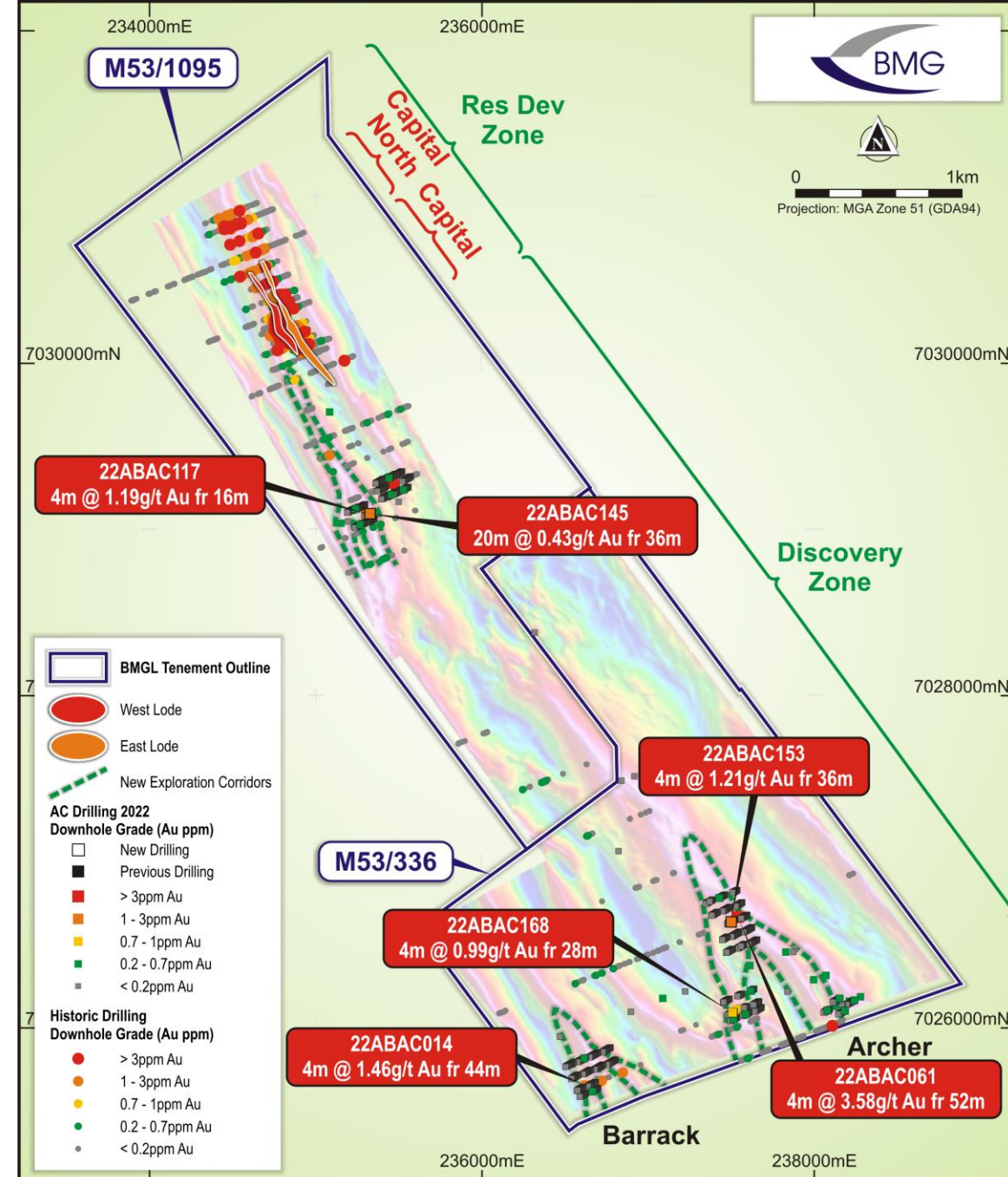


Resource definition at Capital

- BMG's recent drill programs focused on a limited 200m x 600m area within Capital – known strike now exceeds 1.5km
- Multiple historic high-grade intersections reported outside area drilled
- Sporadic historical drilling at Capital North intersected thick intervals of high-grade gold, including:
 - **58m @ 1.71g/t Au from 77m (95WJVP274)**
 - **8m @ 14.47g/t Au from 114m (96CJVP024)**
 - **2m @ 27.9g/t Au from 27m (95WJVP280)**

Regional drilling

- Major 2022 AC drilling program testing southern SAM targets highlights three highly prospective, large anomalous Au zones
 - **Capital South – 1,700m, incl. 4m @ 1.14g/t Au (22ABAC117)**
 - **Archer – 1,400m, incl. 4m @ 3.58g/t Au (22ABAC061)**
 - **Barrack – 250m+, incl 4m @ 1.46g/t Au (22ABAC014)**
- Extensive supergene mineralisation hints at possible repetitions of Capital



Why invest?

✓ **Three WA Gold Projects**

Three 100% owned gold projects in exciting regions of Western Australia

✓ **Strategic Landholdings**

Two projects have high-grade gold confirmed by drilling and/or mining, with South Boddington providing an early-stage exploration play on a world-class gold belt

✓ **Advanced Exploration**

Diamond drilling targeting a maiden Mineral Resource at Capital, and regional aircore drilling delivering pipeline of new highly-prospective targets

✓ **Attractive EV**

EV attractive relative to advanced exploration to date, providing strong valuation leverage to potential resource definition and further exploration success



High-Grade Gold in Western Australia

Contact:

More information:

Bruce McCracken
Managing Director
+61 8 9424 9390
www.bmgl.com.au

Contact:

For media and investor queries:

Gerard McArtney
Cannings Purple
+61 487 934 880
gmcartney@canningspurple.com.au

BMG Resources Limited
ACN 107 118 678
ASX:BMG